



Talbot Road, W2

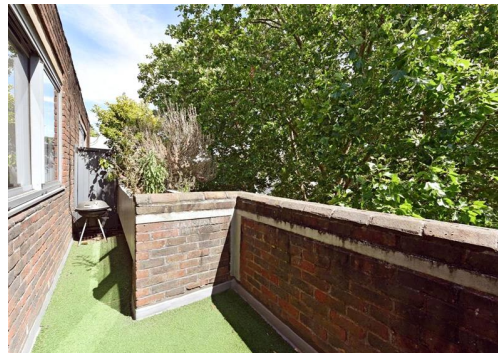
Talbot Road, W2

An immaculate and bright three bedroom maisonette with a south facing balcony in this purpose-built block in Notting Hill.

This section of Talbot Road, between Ledbury Road to the West and Chepstow to the East is very popular; Westbourne Grove is a short walk away with its many bars and restaurant as well as the more practical transport links at Westbourne Park tube station.

Council Tax Band: D
Deposit: £4,375

Asking price: £875 pw



Whilst every effort is made to ensure the accuracy of these details, it should be noted that the measurements are approximate only. Floorplans are for representation purposes only and prepared according to the RICS Code of Measuring Practice by our floorplan provider. Therefore, the layout of doors, windows and rooms are approximate and should be regarded as such by any prospective tenant.

020 7096 9476

contact@landstones.co.uk