



Stanhope Gardens, SW7

Stanhope Gardens, SW7

Offered on a Short-Let basis, a stunning one bedroom apartment in of London's most sought-after addresses.

This exceptional property offers a refined slice of vibrant London living—perfectly positioned just a short walk from world-class cafés, restaurants, boutiques, and the cultural landmarks of nearby museums.

Deposit: £5,400

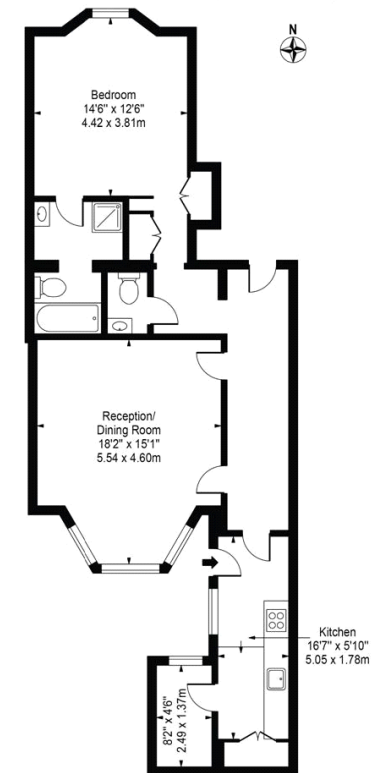
Garden details: Communal Garden

Access To Communal Gardens, All Bills Inclusive , Short Let

Asking price: £1,250 pw



Stanhope Gardens
Approx. Gross Internal Area 849 Sq Ft - 78.87 Sq M



Lower Ground Floor

For Illustration Purposes Only - Not To Scale

This floor plan should be used as a general outline for guidance only and does not constitute in whole or in part an offer or contract. Any intending purchaser or lessee should satisfy themselves by inspection, searches, enquiries and full survey as to the correctness of each statement. Any areas, measurements or distances quoted are approximate and should not be used to value a property or be the basis of any sale or let.

020 7096 9476

contact@landstones.co.uk

Whilst every effort is made to ensure the accuracy of these details, it should be noted that the measurements are approximate only. Floorplans are for representation purposes only and prepared according to the RICS Code of Measuring Practice by our floorplan provider. Therefore, the layout of doors, windows and rooms are approximate and should be regarded as such by any prospective tenant.