



Petyt Place, SW3



## Petyt Place, SW3

Offered on a Short-Let basis, this beautifully traditional and generously proportioned six-bedroom, three-bathroom family home, located in one of London's most prestigious enclaves.

Tucked away on Petyt Place, a quiet, leafy cul-de-sac off Cheyne Walk with only five residences, this exceptional home enjoys stunning views over the River Thames.

Set across four floors, the house exudes character and charm, featuring parquet flooring, fine art, and antiques inspired by the Arts and Crafts movement. Thoughtfully laid out, it offers a large separate kitchen, utility room, private garden, family room, dining room, and a welcoming reception room.

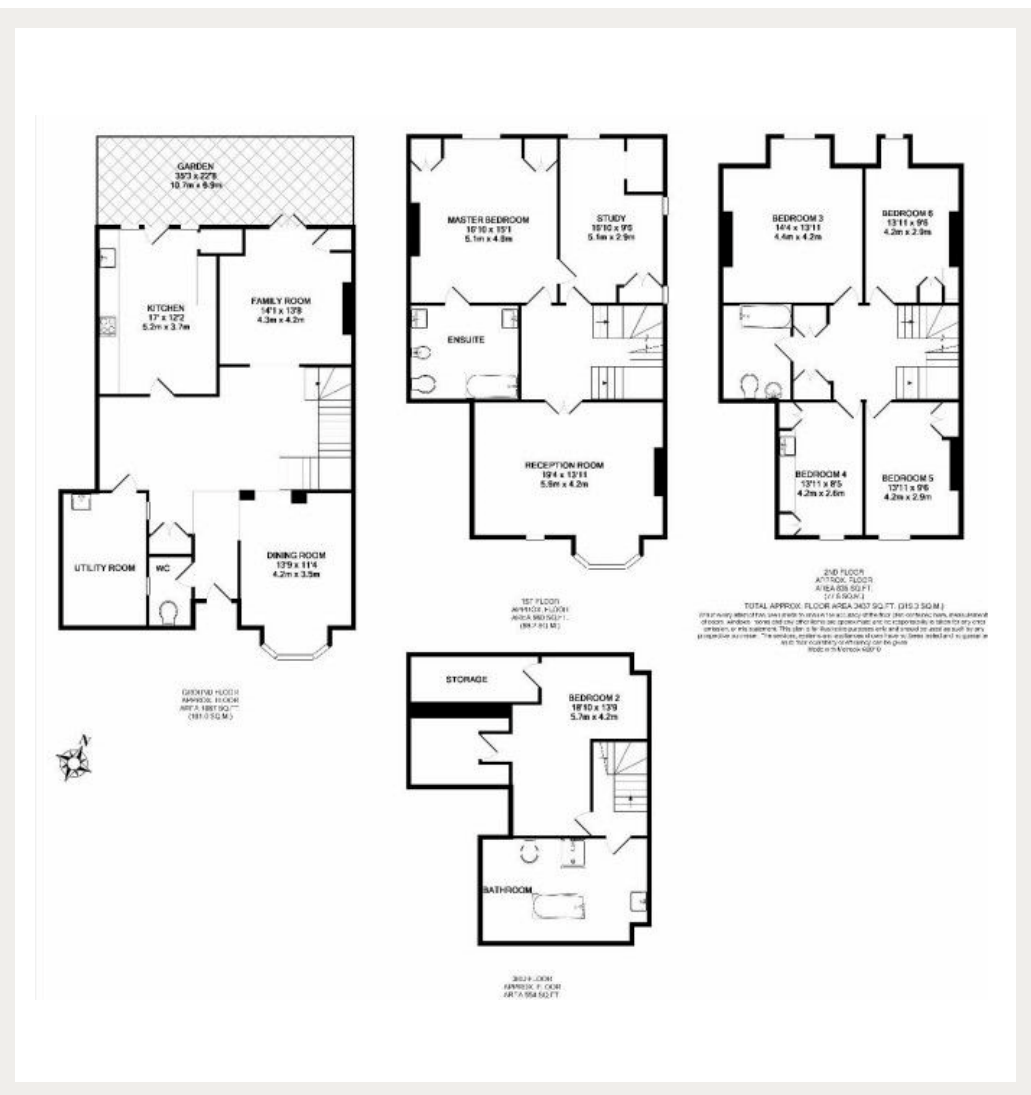
The first floor hosts a spacious principal suite complete with a generous ensuite bathroom, ample built-in storage, and a versatile dressing room or study. The upper levels include five additional bedrooms, two bathrooms, and access to a delightful roof terrace, perfect for enjoying the surrounding views.

Located in historic Old Chelsea between the Albert and Battersea Bridges. Petyt Place is only a few moments away from the King's Road, renowned for trendy clothes shops, antiques arcades and cutting-edge restaurants. Sloane Square is also just a short walk.

Council Tax Band: H  
Deposit: £13,000

All Bills Inclusive, Short Let

**Asking price:** £3,000 pw



Whilst every effort is made to ensure the accuracy of these details, it should be noted that the measurements are approximate only. Floorplans are for representation purposes only and prepared according to the RICS Code of Measuring Practice by our floorplan provider. Therefore, the layout of doors, windows and rooms are approximate and should be regarded as such by any prospective tenant.

020 7096 9476

contact@landstones.co.uk