



Harrington Gardens, SW7

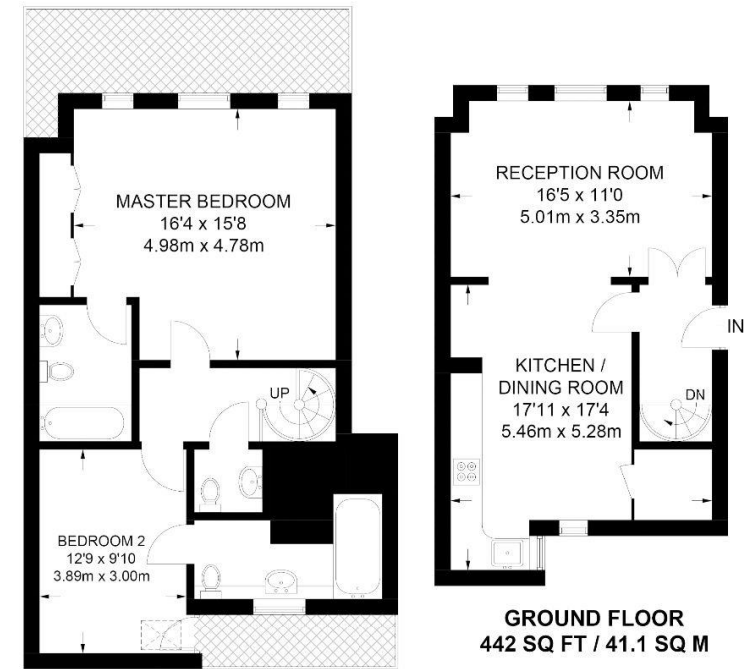
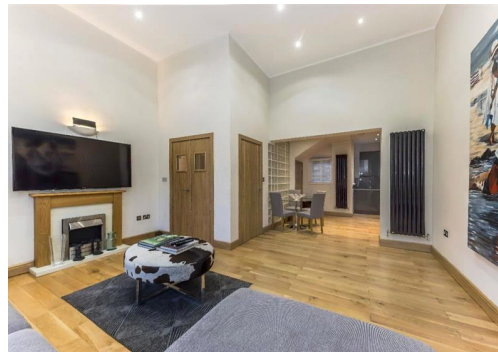
Harrington Gardens, SW7

A spectacular split level two bedroom and two bathroom apartment within this imposing period conversion in South Kensington.

Harrington Gardens is a sought-after South Kensington address offering easy access to the many boutiques, bars and restaurants of Gloucester Road and Old Brompton Road. Hyde Park is also within walking distance.

Deposit: £6,250

Asking price: £1,250 pw



LOWER GROUND FLOOR
623 SQ FT / 57.9 SQ M

APPROXIMATE GROSS INTERNAL AREA
1065 SQ FT / 99.0 SQ M

This plan has been drawn for illustrative and identification purposes only.

Whilst every effort is made to ensure the accuracy of these details, it should be noted that the measurements are approximate only. Floorplans are for representation purposes only and prepared according to the RICS Code of Measuring Practice by our floorplan provider. Therefore, the layout of doors, windows and rooms are approximate and should be regarded as such by any prospective tenant.

020 7096 9476

contact@landstones.co.uk