



Grosvenor Crescent Mews, SW1X



## Grosvenor Crescent Mews, SW1X

A superb five bedroom family home situated in the only gated mews on the Grosvenor Belgravia Estate.

Grosvenor Crescent Mews, a 19th-century gem accessed from Grosvenor Crescent, stands in Belgravia with a rich history. Centrally located, the property provides easy access to Mayfair, Knightsbridge, Chelsea, and Hyde Park. Facing the Peninsula Hotel, Grosvenor Crescent Mews is also moments from Hyde Park's leafy expanse and the designer delights of Knightsbridge, it boasts seamless transport links via Victoria and Hyde Park Corner.

Council Tax Band: H

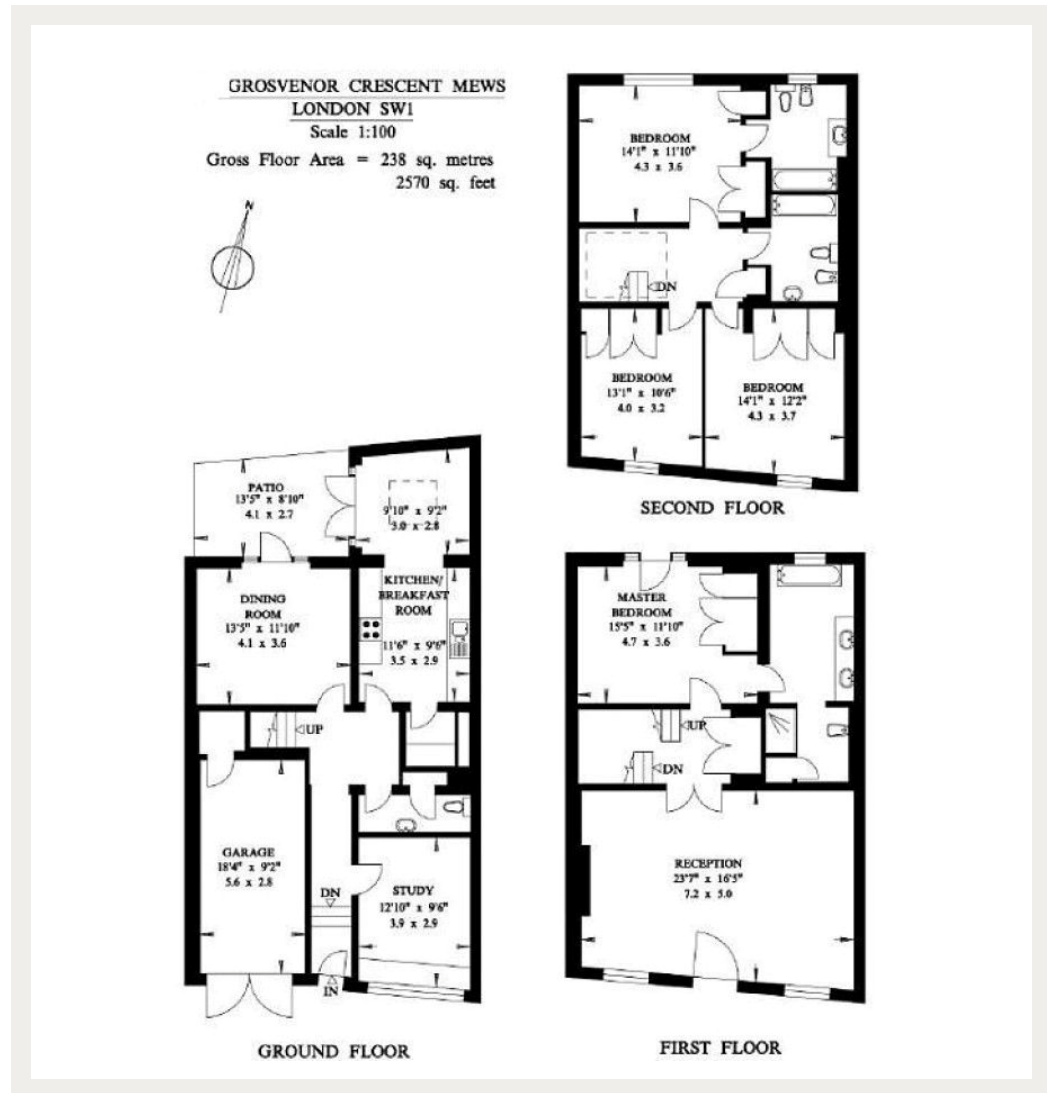
Deposit: £16,500

Parking options: Off Street

Garden details: Private Garden

Gated Mews, Off-street parking, Porter

**Asking price:** £2,750 pw



Whilst every effort is made to ensure the accuracy of these details, it should be noted that the measurements are approximate only. Floorplans are for representation purposes only and prepared according to the RICS Code of Measuring Practice by our floorplan provider. Therefore, the layout of doors, windows and rooms are approximate and should be regarded as such by any prospective tenant.

020 7096 9476

contact@landstones.co.uk