



**Philbeach Gardens, SW5**

## Philbeach Gardens, SW5

Offered on a short-let basis, this sleek and modern two-bedroom, two-bathroom apartment is beautifully finished and located on the first floor of a classic redbrick period building.

The property features wooden floors and a private terrace with views over the communal gardens and nearby tennis courts.

Philbeach Gardens is a quiet residential crescent just moments from Earl's Court tube station, providing excellent access to the city and London's shopping districts. It is also within easy reach of Kensington High Street and the open spaces of Hyde Park and Kensington Gardens.

Garden details: Private Garden

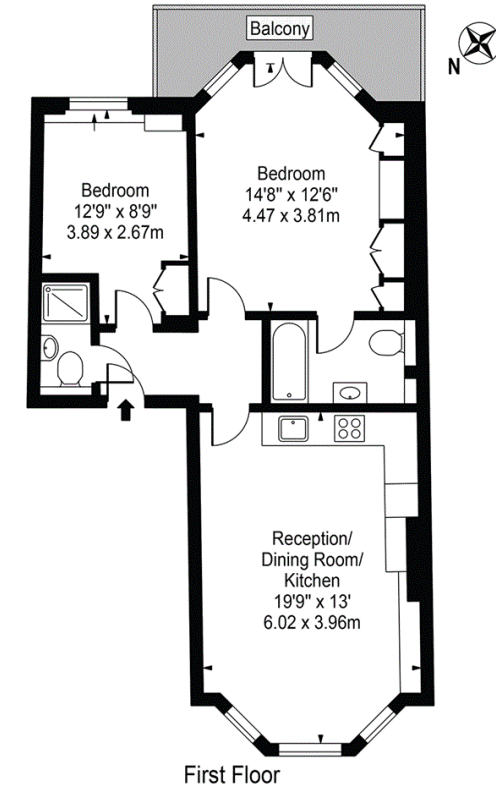
Short Let, All Bills Inclusive, Private Terrace, Access To Communal Gardens

**Asking price:** £2,000 pw



### Philbeach Gardens

Approx. Gross Internal Area 647 Sq Ft - 60.11 Sq M



First Floor

For Illustration Purposes Only - Not To Scale  
This floor plan should be used as a general outline for guidance only and does not constitute in whole or in part an offer or contract. Any intending purchaser or lessee should satisfy themselves by inspection, searches, enquiries and full survey as to the correctness of each statement. Any areas, measurements or distances quoted are approximate and should not be used to value a property or be the basis of any sale or let.

020 7096 9476

contact@landstones.co.uk

Whilst every effort is made to ensure the accuracy of these details, it should be noted that the measurements are approximate only. Floorplans are for representation purposes only and prepared according to the RICS Code of Measuring Practice by our floorplan provider. Therefore, the layout of doors, windows and rooms are approximate and should be regarded as such by any prospective tenant.