



Newman Street, W1T

## Newman Street, W1T

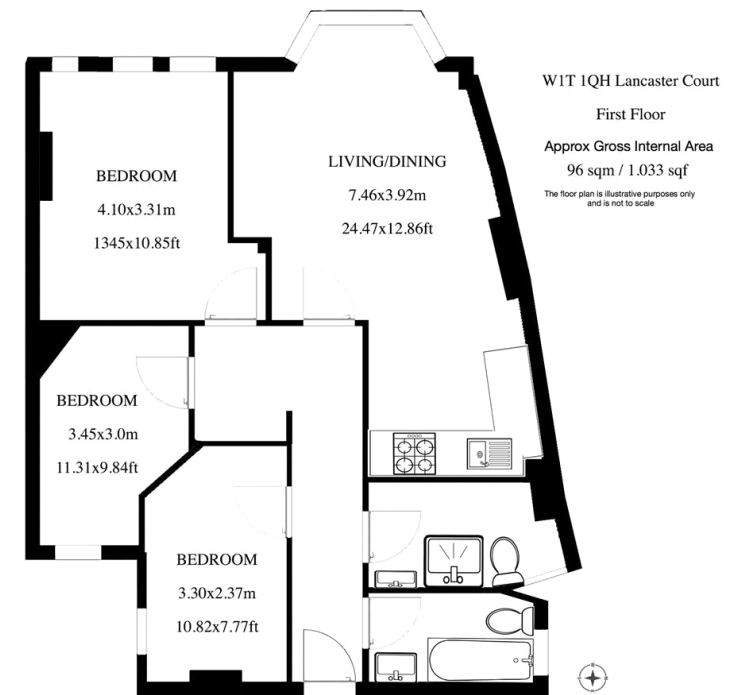
A recently refurbished three bedroom apartment set on the second floor (with lift) with wooden floors throughout. The property is centrally located on this popular street in the heart of Fitzrovia.

Situated in the heart of Fitzrovia, the flat is superbly located for the world class shops and restaurants of Fitzrovia, Marylebone and the West End, together with the greenery of Regent's Park.

The transport links are excellent from nearby Tottenham Court Road (0.3 miles), Goodge Street (0.3 miles) and Oxford Circus (0.4 miles) underground stations along with Euston (0.7 miles) and King's Cross St Pancras (1.8 miles) train stations, and access to the West and Heathrow via the A40.

Council Tax Band: E  
Deposit: £8,100

**Asking price:** £1,350 pw



020 7096 9476

contact@landstones.co.uk

Whilst every effort is made to ensure the accuracy of these details, it should be noted that the measurements are approximate only. Floorplans are for representation purposes only and prepared according to the RICS Code of Measuring Practice by our floorplan provider. Therefore, the layout of doors, windows and rooms are approximate and should be regarded as such by any prospective tenant.