



Fulham Road, SW3

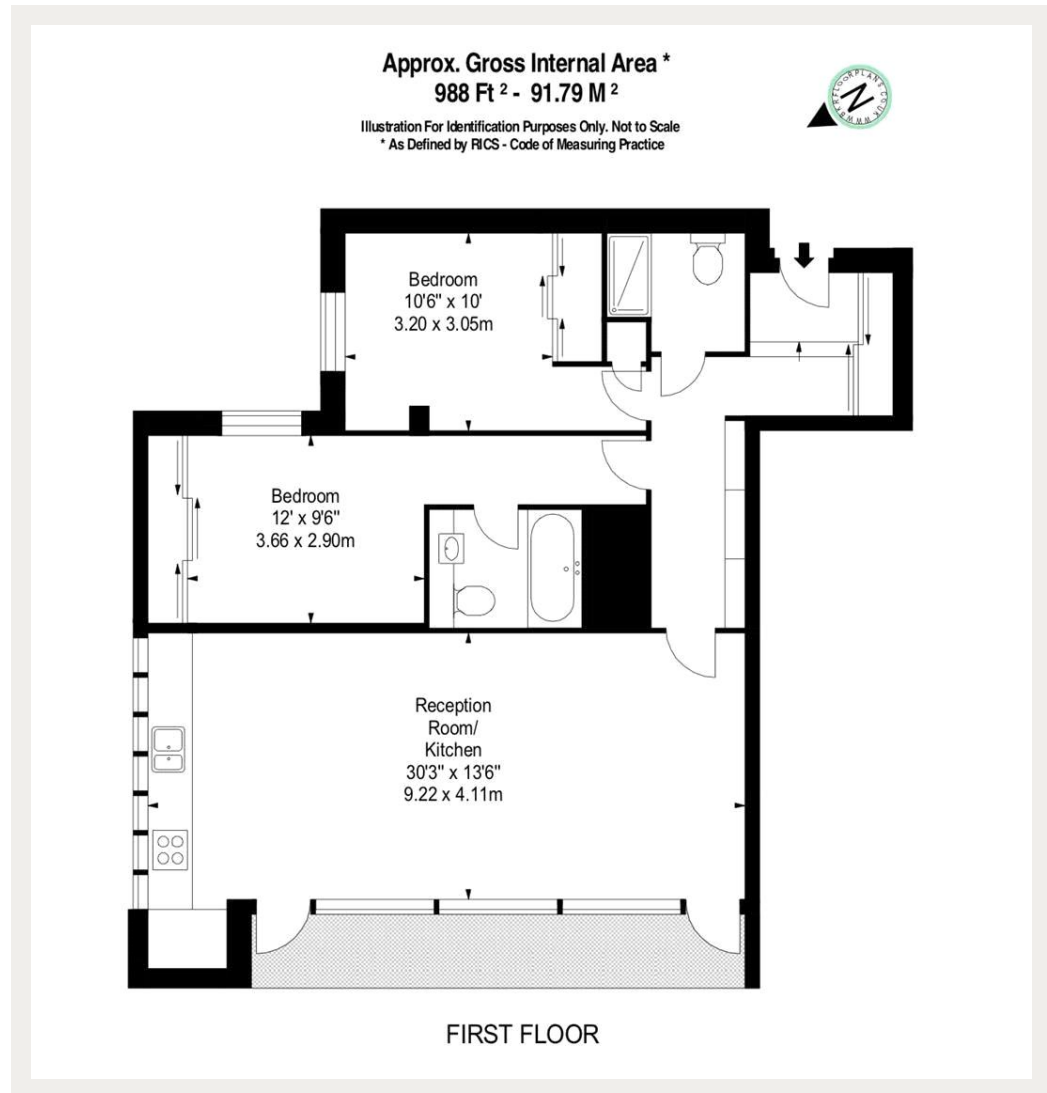
Fulham Road, SW3

A modern two bedroom apartment on the first floor (with lift) of a well run portered building located in the heart of South Kensington.

Situated moments away from the many shops, bars and restaurants of South Kensington, Chelsea and Knightsbridge. The nearest underground station is South Kensington.

Council Tax Band: G
Deposit: £8,100

Asking price: £1,350 pw



020 7096 9476

contact@landstones.co.uk

Whilst every effort is made to ensure the accuracy of these details, it should be noted that the measurements are approximate only. Floorplans are for representation purposes only and prepared according to the RICS Code of Measuring Practice by our floorplan provider. Therefore, the layout of doors, windows and rooms are approximate and should be regarded as such by any prospective tenant.