



Holland Road, W14

Holland Road, W14

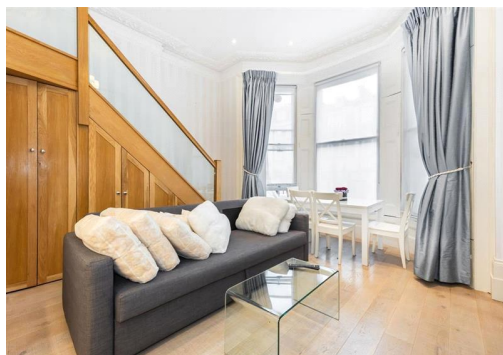
A modern studio with a separate sleeping area set on the raised ground floor of this striking white stucco fronted building, perfect property for a single professional.

Holland Road is in a sought after location for easy access to Kensington (Olympia) Overground and the amenities of Kensington and Notting Hill. Holland Park and London's impressive Westfield Shopping Centre are also close by.

Deposit: £2,000

Including Bills

Asking price: £400 pw



020 7096 9476

contact@landstones.co.uk

Whilst every effort is made to ensure the accuracy of these details, it should be noted that the measurements are approximate only. Floorplans are for representation purposes only and prepared according to the RICS Code of Measuring Practice by our floorplan provider. Therefore, the layout of doors, windows and rooms are approximate and should be regarded as such by any prospective tenant.