



Pont Street, SW1X

## Pont Street, SW1X

Landstones are proud to offer this beautifully presented two-bedroom duplex apartment with private outdoor space, perfectly positioned in the heart of Knightsbridge.

This immaculate home offers bright and well-proportioned living across two floors, featuring high ceilings, stylish wood flooring, and bespoke finishes throughout. The apartment comprises a spacious reception room, a sleek modern kitchen, guest WC, and two double bedrooms—both with air conditioning—served by a contemporary family bathroom. A private, low-maintenance patio adds a rare touch of outdoor living in this prime location.

Located on the prestigious Pont Street, this address places you just 0.3 miles from Harrods and only 0.1 miles from the luxury boutiques of Sloane Street, offering unparalleled access to Knightsbridge's renowned cafés, restaurants, and lifestyle amenities.

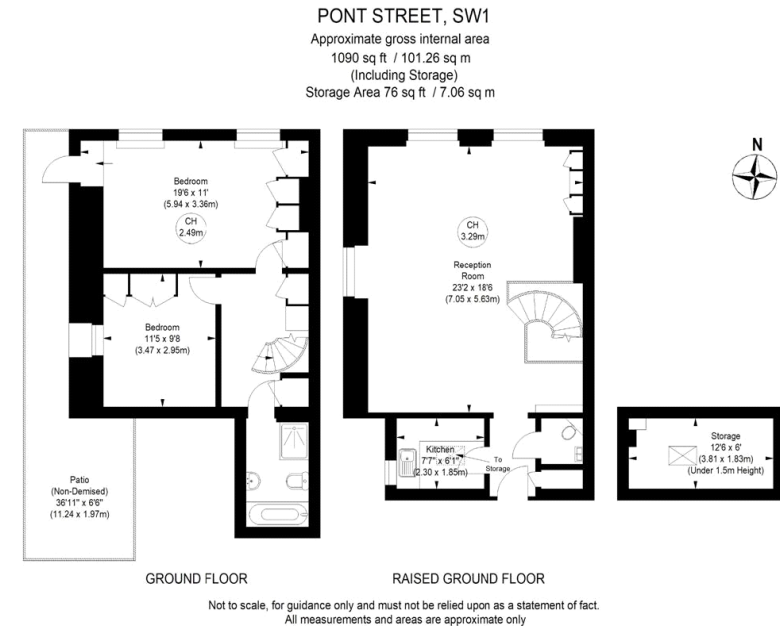
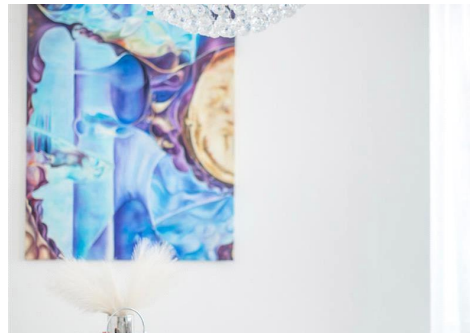
Council Tax Band: G (Kensington and Chelsea)

Tenure: Leasehold

Service Charge:

Private Outside Space , High Ceilings, Air Conditioning,  
Two Double Bedrooms, Bespoke Fittings Throughout

**Asking price:** £1,395,000



020 7096 9476

contact@landstones.co.uk

Whilst every effort is made to ensure the accuracy of these details, it should be noted that the measurements are approximate only. Floorplans are for representation purposes only and prepared according to the RICS Code of Measuring Practice by our floorplan provider. Therefore, the layout of doors, windows and rooms are approximate and should be regarded as such by any prospective purchaser. Any internal photographs are intended as a guide only and it should not be assumed that any of the furniture/fittings are included in any sale. Where shown, details of lease, ground rent and service charge are provided by the vendor and their accuracy cannot be guaranteed, as the information may not have been verified and further checks should be made either through your solicitor/conveyance. Where appliances, including central heating, are mentioned, it cannot be assumed that they are in working order, as they have not been tested. Please also note that wiring, plumbing and drains have not been checked.