



Old Court Place, W8

## Old Court Place, W8

Landstones are pleased to offer this well-appointed two-bedroom apartment, located on the third floor (with lift access) of a well-maintained, portered mansion block in the heart of Kensington-one of London's most prestigious postcodes.

The apartment boasts over 3 meter high ceilings and wood flooring throughout the living area, creating a bright and spacious atmosphere. The open-plan kitchen and reception room provide an ideal space for both modern living and entertaining. There are two generously sized bedrooms, each with built-in storage, while the principal bedroom also benefits from a contemporary en-suite bathroom. A separate family bathroom is conveniently located off the hallway.

The building benefits from a dedicated porter, enhancing the sense of safety and security-making this the perfect London home or pied-à-terre. Accessibility is seamless, with lift access ensuring comfort and ease in everyday living.

Located on the sought-after Old Court Place, the property is just moments from the amenities of Kensington High Street, with a variety of shops-including Whole Foods directly opposite-alongside acclaimed restaurants, cafés, and lively bars. The open green spaces of Hyde Park are also just a short walk away, offering a peaceful escape from city life.

High Street Kensington Underground Station is within close proximity, providing excellent transport links across London via the Circle and District lines.

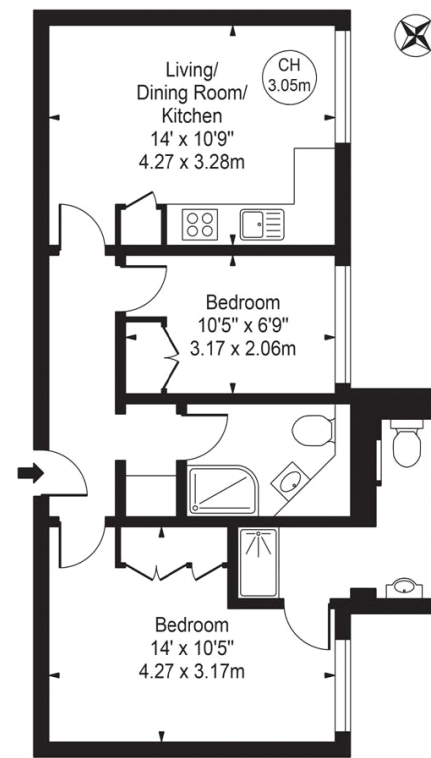
Council Tax Band: E (Kensington and Chelsea)  
Tenure: Leasehold

Porter, Well Maintained Mansion Block, Lift, Prime Location, No Onward Chain



### Old Court House

Approx. Gross Internal Area 540 Sq Ft - 50.17 Sq M



For Illustration Purposes Only - Not To Scale

This floor plan should be used as a general outline for guidance only and does not constitute in whole or in part an offer or contract. Any intending purchaser or lessee should satisfy themselves by inspection, searches, enquiries and full survey as to the correctness of each statement. Any areas, measurements or distances quoted are approximate and should not be used to value a property or be the basis of any sale or let.

Whilst every effort is made to ensure the accuracy of these details, it should be noted that the measurements are approximate only. Floorplans are for representation purposes only and prepared according to the RICS Code of Measuring Practice by our floorplan provider. Therefore, the layout of doors, windows and rooms are approximate and should be regarded as such by any prospective purchaser. Any internal photographs are intended as a guide only and it should not be assumed that any of the furniture/fittings are included in any sale. Where shown, details of lease, ground rent and service charge are provided by the vendor and their accuracy cannot be guaranteed, as the information may not have been verified and further checks should be made either through your solicitor/conveyance. Where appliances, including central heating, are mentioned, it cannot be assumed that they are in working order, as they have not been tested. Please also note that wiring, plumbing and drains have not been checked.