



# FIDLERS MOAT

## LOVES GREEN, HIGHWOOD CM1



LANDSTONES







FIDLERS MOAT, LOVES GREEN, HIGHWOOD, CHELMSFORD, ESSEX CM1

CHELMSFORD 6 MILES | INGATESTONE 4 MILES | M11 MOTORWAY, A12 MOTORWAY, M25 MOTORWAY |  
INGATESTONE STATION 27 MINUTES TO LIVERPOOL STREET

LANDSTONES COUNTRY HOUSE TEAM ARE EXTREMELY PROUD TO PRESENT TO THE MARKET THIS STUNNING BESPOKE DESIGNED AND BUILT FAMILY HOME. FIDLERS MOAT OFFERS OVER 8900FT OF LUXURIOUS FAMILY LIVING AND ADDITIONAL AUXILIARY BUILDINGS AND FACILITIES.

ENTERING THE HOME THROUGH THE OVERSIZED PLATE GLASS DOORS YOU ARE IMMEDIATELY STRUCK BY THE VOLUMES AND LIGHT OF THE RECEPTION AREA AND GRAND WRAP AROUND CASCADE STAIRCASE. THE PROPERTY FLOWS DELIGHTFULLY FROM THIS CENTRAL SIGNATURE ATRIUM THROUGH TO A BEAUTIFUL EXPANSIVE FAMILY KITCHEN PROVIDING OVER 30FT OF OPEN ENTERTAINING SPACE AND THE BEATING HEART OF THE HOUSE. THE KITCHEN ITSELF IS APPOINTED WITH THE FULL RANGE OF INTEGRATED APPLIANCES, INCLUDING AN AGA RANGE, AMERICAN STYLE FRIDGE, COFFEE MACHINE AND CHEF'S ISLAND.

LEADING FURTHER INTO THE GROUND FLOOR YOU WILL FIND A STUNNING FORMAL RECEPTION ROOM WITH FIREPLACE AND COSY WOODBURNING STOVE, THE GRAND DINING ROOM WITH SEATING FOR 16 GUESTS AND WRAP AROUND FRENCH DOORS. COMPLETING THE FLOOR IS A FAMILY SNUG, A TUCKED AWAY OFFICE AND STUDY, A WINE CELLAR, UTILITY ROOM AND TWO CLOAKROOMS.

CONTINUING UP TO THE SUMPTUOUS FIRST FLOOR THE HOME NOW PROVIDES FIVE LUXURIOUS BEDROOM SUITES WITH A WEALTH OF BESPOKE BUILT-IN WARDROBE SOLUTIONS, BRANCHING OFF FROM THE HALLWAYS VIA THE MAIN ATRIUM, WITH ITS FAR-REACHING FRAMED VIEWS AND LOFTY VAULTED CEILING. THE PRINCIPAL SUITE HAS DOUBLE DOORS OPENING TO ITS OWN PRIVATE BALCONY, A FITTED DRESSING ROOM AND A MODERN EN SUITE BATHROOM. THE HOUSE ALSO FEATURES A GUEST SUITE WITH ITS OWN DRESSING ROOM AND FRENCH DOORS AND THREE FURTHER BEDROOMS ALL SERVICED BY CONTEMPORARY EN SUITE FACILITIES.









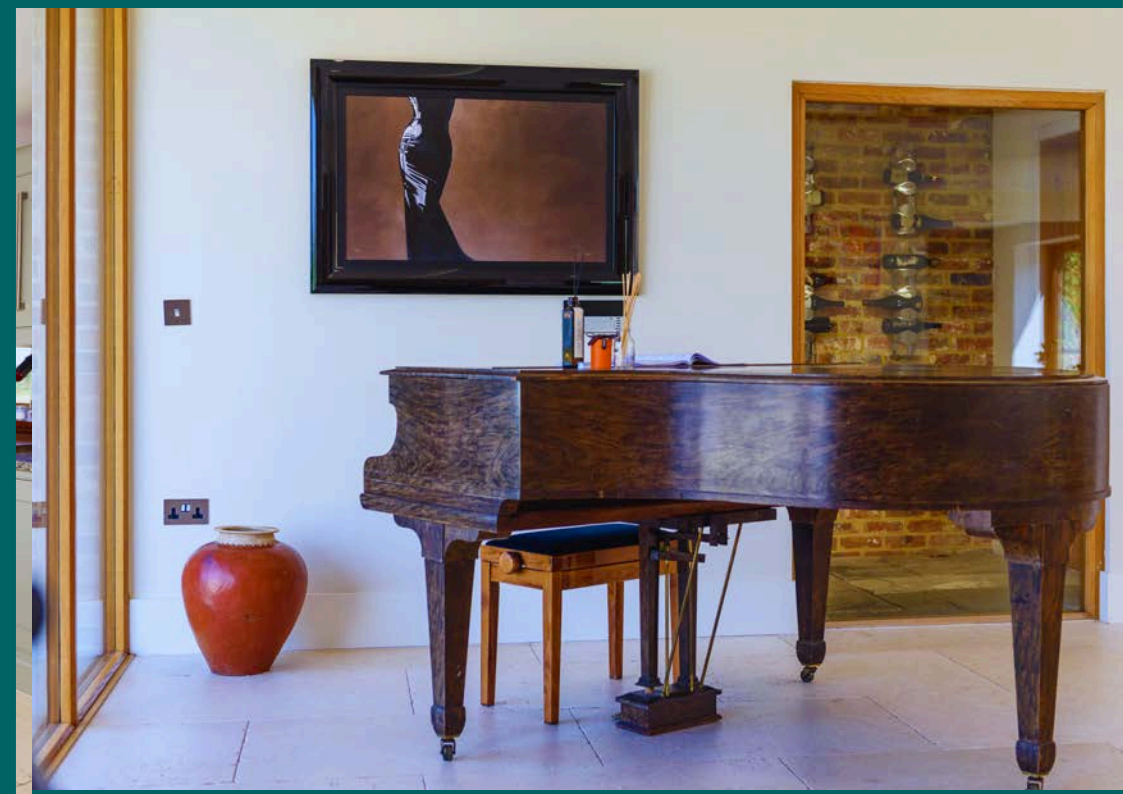
DESIGNED TO FLOOD THE PRINCIPAL ROOMS WITH LIGHT THROUGH THE FLOOR TO CEILING PICTURE GALLERY WINDOWS THE HOME MAKES THE MOST OF THE STUNNING SURROUNDINGS AND BRINGS THE OUTSIDE INTO THE HOME AND EXPANDS THE LIVING SPACES OUT INTO THE GARDENS.

FIDLER'S MOAT AS THE NAME SUGGESTS SITS INSIDE ITS OWN NATURE FILLED MOAT. SET IN 5 ACRES OF GARDENS, FIELDS, HEDGEROWS AND WELL-ESTABLISHED PLANTING. THE HOME ITSELF IS CLOSELY SURROUNDED BY MANICURED LANDSCAPED GARDENS, DECKED AREAS AND SUNTRAP COURTYARDS.

ACCESS TO THE PROPERTY COMES VIA A SWEEPING GRAVEL DRIVE AND THROUGH SIGNATURE ELECTRIC GATES. IN ADDITION TO THE PRINCIPAL HOUSE FIDLER'S MOAT ALSO INCLUDES PURPOSE BUILT STABLE AND TACK FACILITIES, A LARGE STAND-ALONE DOUBLE GARAGE WITH AUXILIARY 1 BEDROOM APARTMENT ABOVE AND A DREAM HOME GYM TO RIVAL ANY COMMERCIAL LEISURE FACILITIES IN THE AREA.

DURING THE BUILD PHASE OF THE HOUSE AN AREA WAS SET ASIDE FOR THE ADDITION OF A POOL TO BE DISCREETLY ENCLOSED BY PART OF THE ORIGINAL BUILDING WALLS GIVING ANY BUYER SCOPE TO FURTHER ENHANCE AND IMPROVE THE SITE TO THEIR OWN NEEDS.

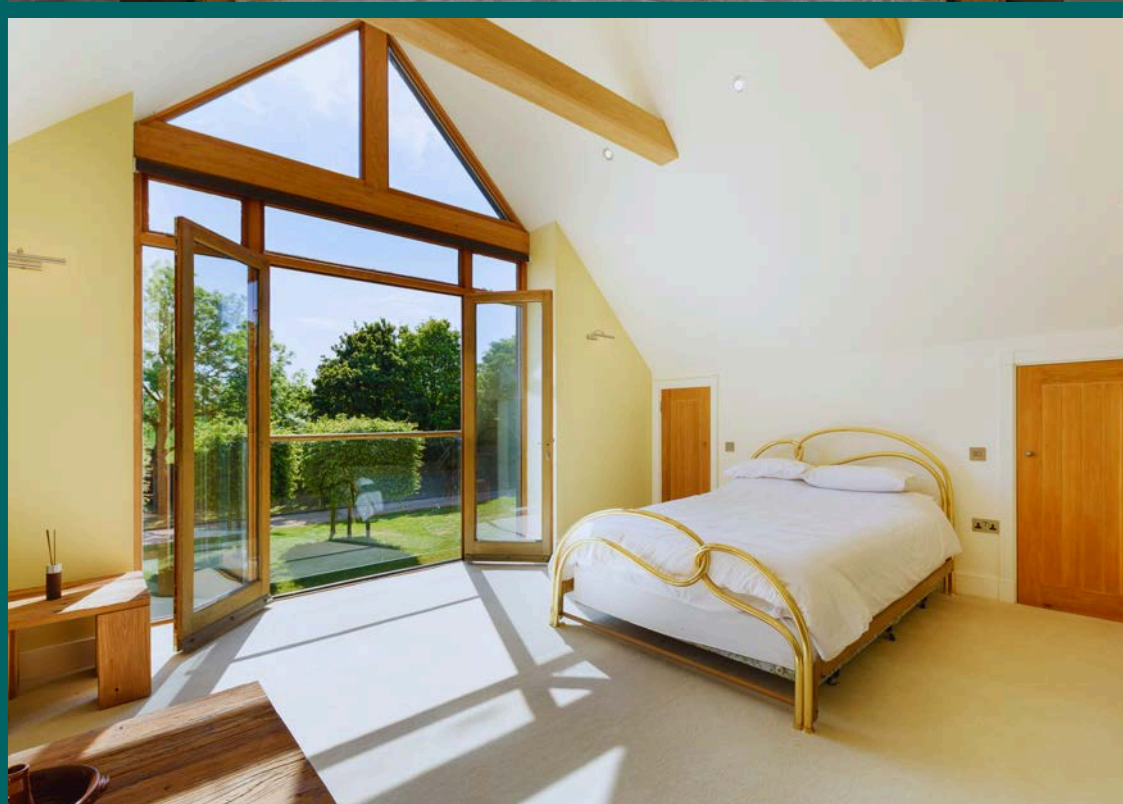
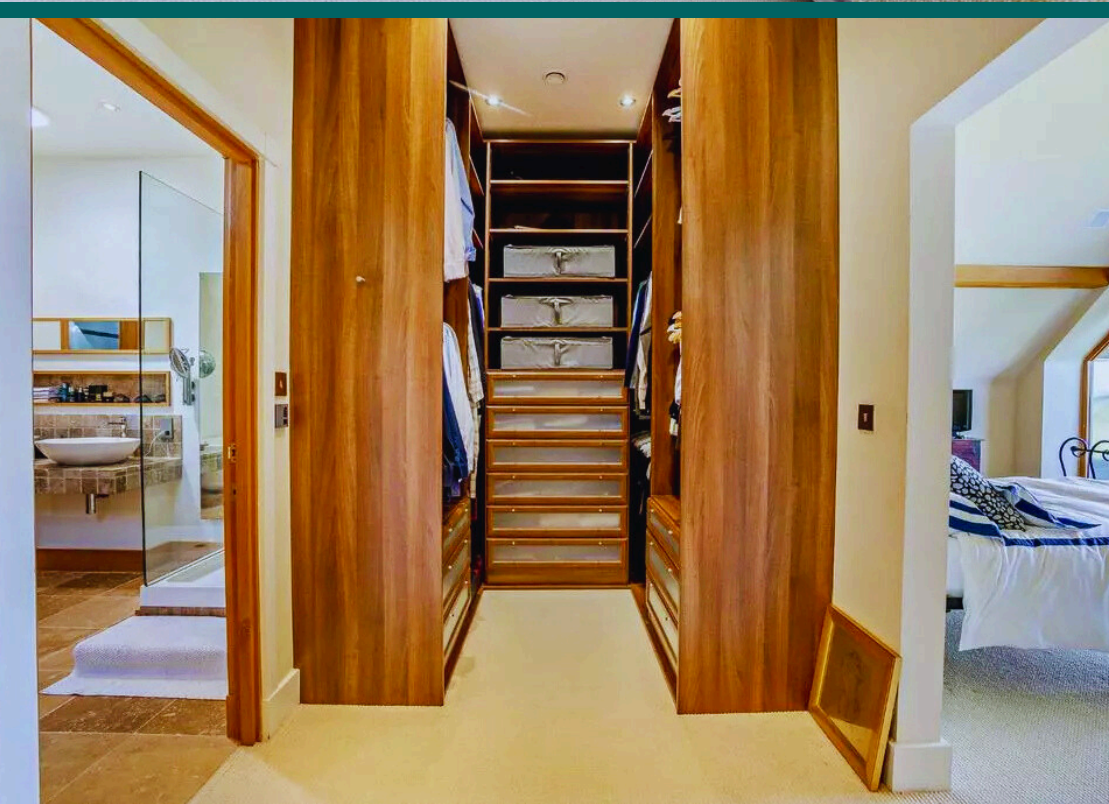














FIDLER'S MOAT, LOVES GREEN HIGHWOOD, CHELMSFORD, CM1 3QJ



RESTRICTED HEAD HEIGHT



APPROXIMATE GROSS INTERNAL AREA: 5878 sq ft, 546m<sup>2</sup>  
 GARAGE : 992 sq ft, 92m<sup>2</sup>  
 OUTBUILDING : 1759 sq ft, 163m<sup>2</sup>  
 TOTAL AREA: 8629 sq ft, 801m<sup>2</sup>

- 8629 SQ FT
- PRIVATE GATED DRIVE
- STABLES
- 5 ACRES
- HOME GYM
- AUXILARY BUILDINGS









LANDSTONES



# COUNTRY HOUSES

020 7096 9476

[WWW.LANDSTONES.CO.UK](http://WWW.LANDSTONES.CO.UK)