



Hans Crescent, SW1X

## Hans Crescent, SW1X

A spacious and stylish lateral apartment finished to the highest standard, set over the third floor (with lift) within this prestigious development moments from Harrods.

Located in the heart of Knightsbridge close to the international designer shops and restaurants of Sloane Street and the lovely boutiques on Beauchamp Place, Harvey Nichols and the famous Harrods. Hyde Park is also moments away.

Council Tax Band: H  
Deposit: £7,500  
Parking options: Off Street

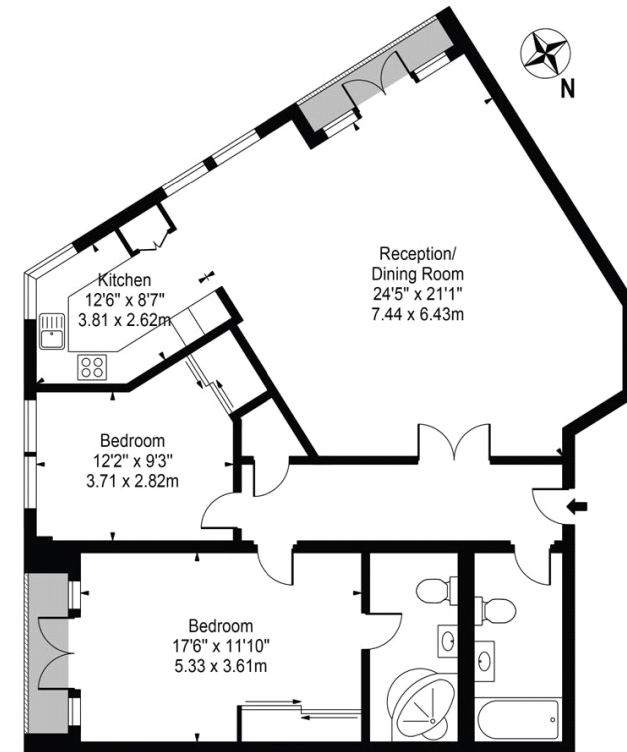
24/7 Porter, Air Conditioning, Outdoor Space, Secure Underground Parking, Pet Friendly

**Asking price:** £1,250 pw



## Hans Crescent

Approx. Gross Internal Area 1194 Sq Ft - 110.93 Sq M



Third Floor

For Illustration Purposes Only - Not To Scale

This floor plan should be used as a general outline for guidance only and does not constitute in whole or in part an offer or contract. Any intending purchaser or lessee should satisfy themselves by inspection, searches, enquiries and full survey as to the correctness of each statement. Any areas, measurements or distances quoted are approximate and should not be used to value a property or be the basis of any sale or let.

020 7096 9476

contact@landstones.co.uk

Whilst every effort is made to ensure the accuracy of these details, it should be noted that the measurements are approximate only. Floorplans are for representation purposes only and prepared according to the RICS Code of Measuring Practice by our floorplan provider. Therefore, the layout of doors, windows and rooms are approximate and should be regarded as such by any prospective tenant.