



Ennismore Gardens, SW7

Ennismore Gardens, SW7

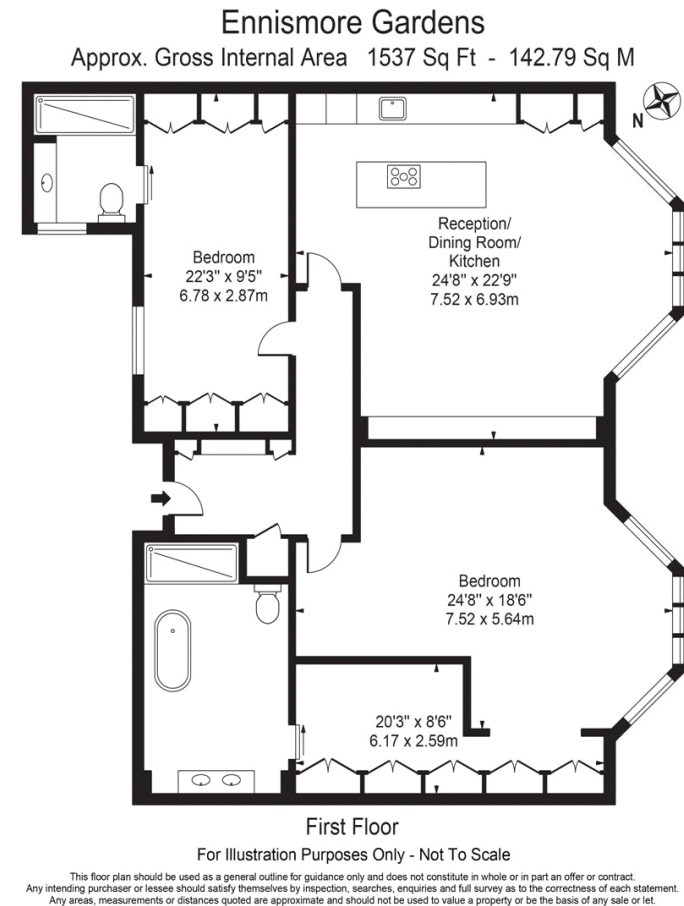
This truly spectacular, brand new, two bedroom, two bathroom apartment has been meticulously interior designed to the highest specification. This reconfigured property retains many unique period features with fantastic communal garden views.

Ennismore Gardens is considered one of Knightsbridge's finest garden squares, conveniently located only a few hundred yards from Hyde Park. It is also in close proximity to Sloane Street and the Brompton Road benefiting from all the international amenities including Harrods and Harvey Nichols.

Council Tax Band: G
Deposit: £27,000
Garden details: Private Garden

Brand New Refurbished, Communal Garden, Lift Access, Porter

Asking price: £4,500 pw



020 7096 9476

contact@landstones.co.uk

Whilst every effort is made to ensure the accuracy of these details, it should be noted that the measurements are approximate only. Floorplans are for representation purposes only and prepared according to the RICS Code of Measuring Practice by our floorplan provider. Therefore, the layout of doors, windows and rooms are approximate and should be regarded as such by any prospective tenant.