



Pont Street, SW1X

Pont Street, SW1X

This immaculate home offers bright and well-proportioned living across two floors, featuring impressive ceiling heights, stylish wood flooring, and bespoke cabinetry and finishes throughout.

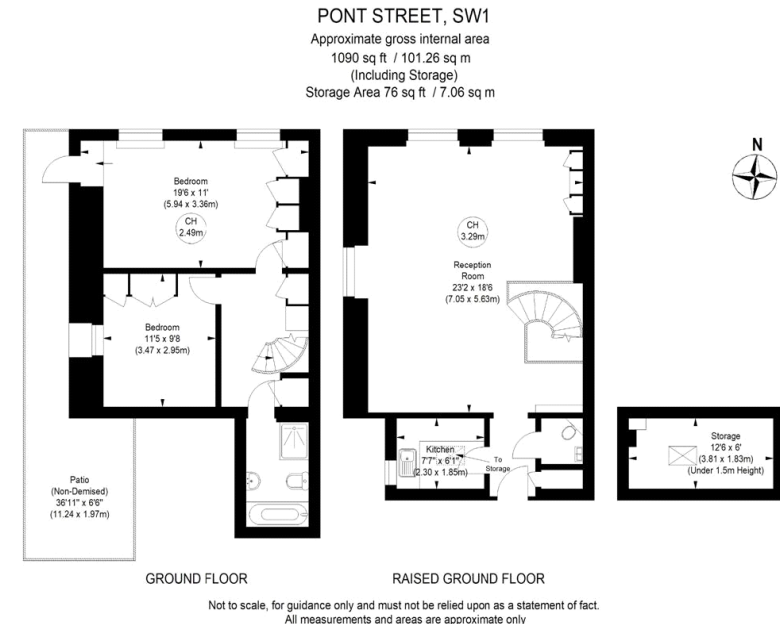
The apartment comprises a spacious and versatile reception room, a sleek modern kitchen, and a guest WC. On the upper floor, you'll find two double bedroom - served by a contemporary family bathroom fitted with both a bath and separate shower. A low-maintenance private patio adds a rare touch of outdoor living in this prime central London location.

Situated on prestigious Pont Street, the property is just 0.3 miles from Harrods and 0.1 miles from the luxury boutiques of Sloane Street, placing world-class shopping, cafés, and restaurants on your doorstep. Hyde Park is also a short stroll away, offering an oasis of green space and tranquillity amidst the vibrancy of Knightsbridge.

Council Tax Band: G (Kensington and Chelsea)
Tenure: Share of Freehold
Service Charge:

High Ceilings, Air Conditioning, Two Double Bedrooms, Bespoke Fittings Throughout, Outside Space, Well Maintained Building

Asking price: Offers Over £1,395,000



020 7096 9476

contact@landstones.co.uk

Whilst every effort is made to ensure the accuracy of these details, it should be noted that the measurements are approximate only. Floorplans are for representation purposes only and prepared according to the RICS Code of Measuring Practice by our floorplan provider. Therefore, the layout of doors, windows and rooms are approximate and should be regarded as such by any prospective purchaser. Any internal photographs are intended as a guide only and it should not be assumed that any of the furniture/fittings are included in any sale. Where shown, details of lease, ground rent and service charge are provided by the vendor and their accuracy cannot be guaranteed, as the information may not have been verified and further checks should be made either through your solicitor/conveyance. Where appliances, including central heating, are mentioned, it cannot be assumed that they are in working order, as they have not been tested. Please also note that wiring, plumbing and drains have not been checked.