



Elystan Place, SW3

Elystan Place, SW3

This stunning, recently refurbished three-bedroom split-level apartment is set within a secure portered building, perfectly positioned in the heart of Chelsea Green.

Spanning over 1,200 sq. ft., the property benefits from wooden floors throughout and a spacious open-plan living area, ideal for entertaining. Neutrally decorated throughout, the home offers a bright and contemporary feel.

Elystan Place provides a serene, village-like ambience in one of Chelsea's most exclusive locations. Just a short walk away, residents can enjoy the high-end shopping and dining options of Sloane Street and King's Road, making this an ideal city retreat.

Council Tax Band: G

Deposit: £8,100

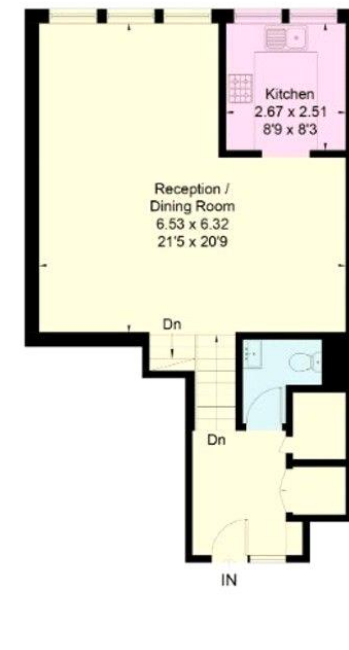
Duplex Apartment, Porter, Prime Location, Quiet Street

Asking price: £1,350 pw



ELYSTAN PLACE, SW3

Approximate Floor Area = 114.1 sq m / 1228 sq ft



Whilst every effort is made to ensure the accuracy of these details, it should be noted that the measurements are approximate only. Floorplans are for representation purposes only and prepared according to the RICS Code of Measuring Practice by our floorplan provider. Therefore, the layout of doors, windows and rooms are approximate and should be regarded as such by any prospective tenant.

020 7096 9476

contact@landstones.co.uk