



**Eardley Crescent, SW5**

## Eardley Crescent, SW5

Landstones are proud to present this elegant split-level three-bedroom apartment, set atop a well-maintained Victorian period conversion.

Offered with a long lease and share of freehold this beautifully finished property boasts an abundance of natural light, well-proportioned living spaces, and a private terrace-ideal for both relaxing and entertaining.

Ideally located between Earl's Court and West Brompton stations, residents enjoy excellent transport links across London. Bousfield Primary School is within walking distance, and the vibrant mix of shops, cafés, and restaurants in Earl's Court and Chelsea are just moments away.

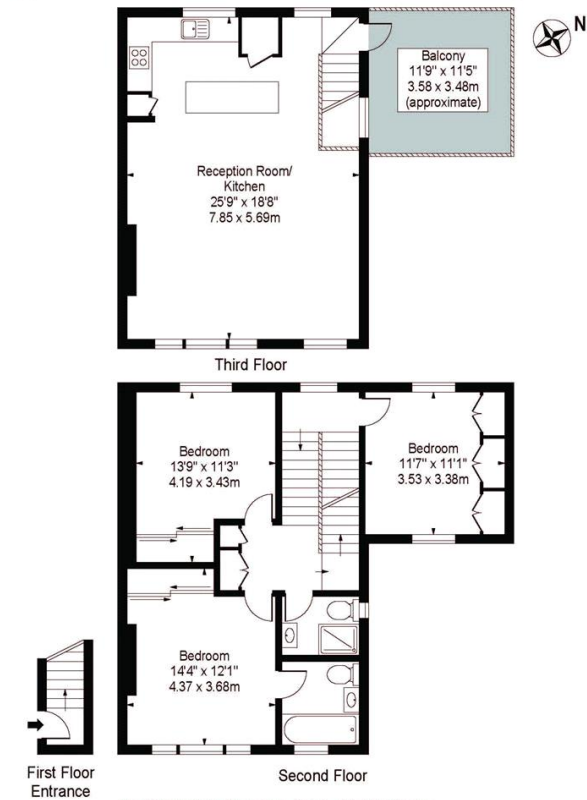
Garden details: Terrace

Private Terrace, Open Plan Kitchen, Split Level, Private Storage Vault, Excellent Transport

**Asking price:** £1,275,000

### Kempford Gardens, SW5 9LA

Approx. Gross Internal Area 1318 Sq Ft - 122.44 Sq M



This floor plan should be used as a general outline for guidance only and does not constitute in whole or in part an offer or contract. Any intending purchaser or lessee should satisfy themselves by inspection, searches, enquiries and full survey as to the correctness of each statement. Any areas, measurements or distances quoted are approximate and should not be used to value a property or be the basis of any sale or let.

020 7096 9476

[contact@landstones.co.uk](mailto:contact@landstones.co.uk)

Whilst every effort is made to ensure the accuracy of these details, it should be noted that the measurements are approximate only. Floorplans are for representation purposes only and prepared according to the RICS Code of Measuring Practice by our floorplan provider. Therefore, the layout of doors, windows and rooms are approximate and should be regarded as such by any prospective purchaser. Any internal photographs are intended as a guide only and it should not be assumed that any of the furniture/fitings are included in any sale. Where shown, details of lease, ground rent and service charge are provided by the vendor and their accuracy cannot be guaranteed, as the information may not have been verified and further checks should be made either through your solicitor/conveyance. Where appliances, including central heating, are mentioned, it cannot be assumed that they are in working order, as they have not been tested. Please also note that wiring, plumbing and drains have not been checked.