



Reeves Mews, W1K

Reeves Mews, W1K

This delightful double-bedroom apartment offers the perfect combination of style, comfort and location.

Situated on the top floor (with lift) of a well maintained purpose block, the apartment features quiet south-facing views, creating a bright and airy living space.

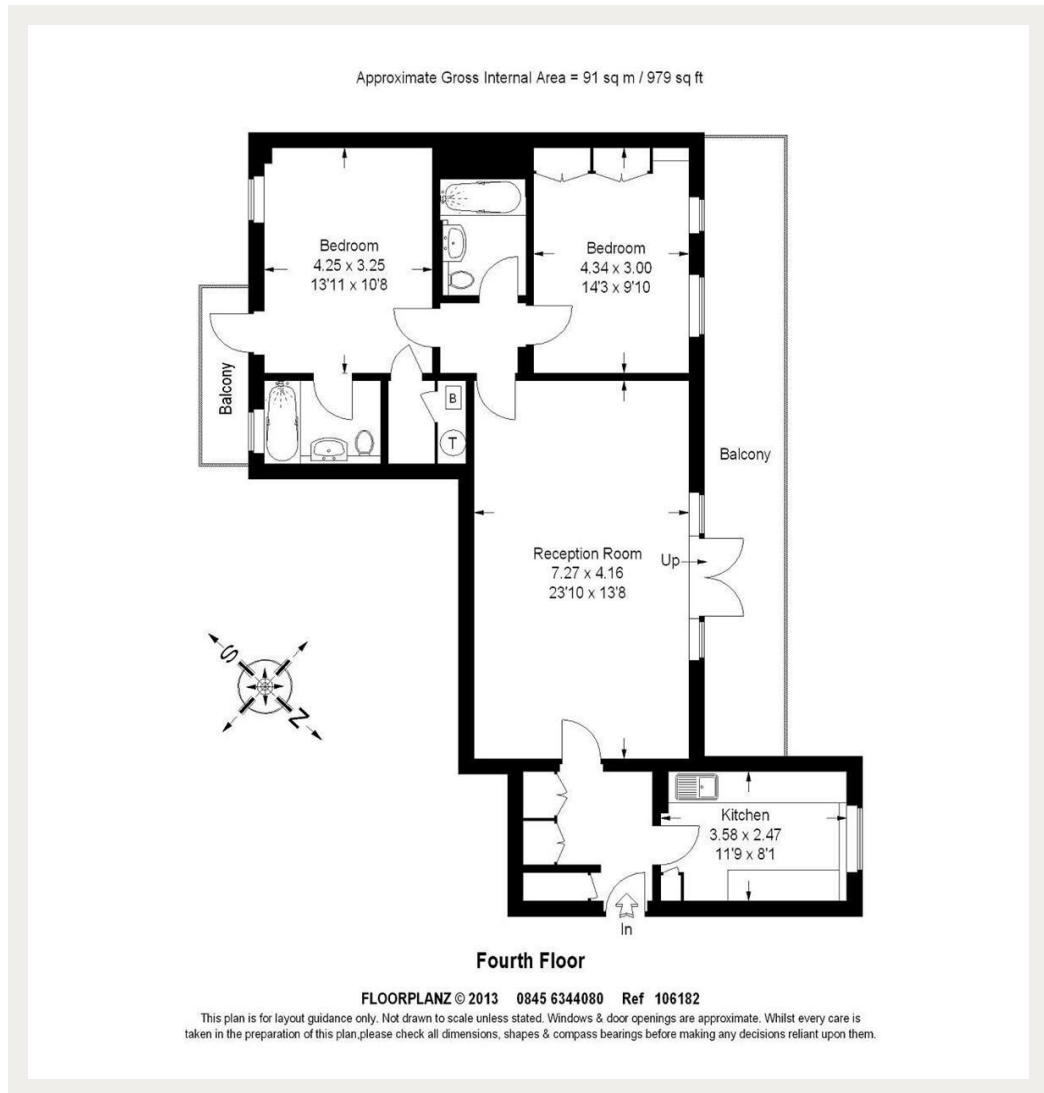
Reeves Mews is a much sought-after location in the heart of Mayfair close to proximity to the shops, bars and restaurants on Piccadilly and Dover Street. Conveniently located for Marble Arch or Green Park Station, Reeves Mews is also moments from Hyde Park and Green Park.

Council Tax Band: G

Deposit: £9,300

24/7 Porter, Top Floor, Lift Access, Outdoor Space

Asking price: £1,550 pw



020 7096 9476

contact@landstones.co.uk

Whilst every effort is made to ensure the accuracy of these details, it should be noted that the measurements are approximate only. Floorplans are for representation purposes only and prepared according to the RICS Code of Measuring Practice by our floorplan provider. Therefore, the layout of doors, windows and rooms are approximate and should be regarded as such by any prospective tenant.