



Old Manor Yard, London

Old Manor Yard, London

A beautifully refurbished, turnkey five-bedroom house, finished to an exceptionally high standard, set within a secure gated mews in the heart of Earl's Court and offering over 1,400 sq ft of well-arranged living space.

Upon entering, you are welcomed into a generous open-plan living and kitchen area, designed for modern living. The bespoke kitchen features integrated appliances, a stylish island breakfast bar for informal dining, and large reimaged windows that flood the space with natural light. This floor also benefits from a separate utility room and guest WC.

The first floor offers three generously proportioned bedrooms, all with built-in storage. The principal bedroom boasts a well-appointed en suite with a walk-in shower.

The second floor provides two further bedrooms and a contemporary family bathroom, with one bedroom enjoying access to a Juliet balcony.

Perfectly located, the property enjoys an array of local amenities including boutique shops, cafés, and restaurants in Earl's Court and nearby South Kensington. Earl's Court Underground Station (District and Piccadilly lines) is just a short walk away, offering direct connections to the West End, the City, and Heathrow Airport—making this a prime central London home with exceptional convenience.

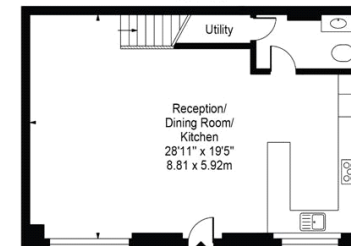
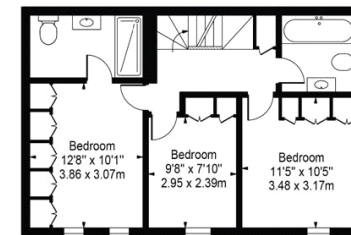
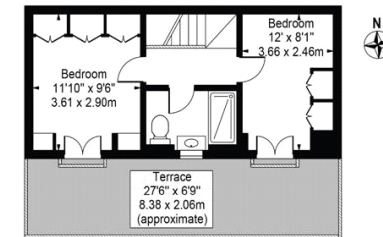
Council Tax Band: G (Kensington and Chelsea)
Tenure: Freehold

5 Bedrooms, Brand New Refurbishment, Close To Local Amenities, Open Plan Kitchen, Gated Mews

Asking price: £1,900,000



Old Manor Yard
Approx. Gross Internal Area 1427 Sq Ft - 132.57 Sq M



For Illustration Purposes Only - Not To Scale

This floor plan should be used as a general outline for guidance only and does not constitute in whole or in part an offer or contract. Any intending purchaser or lessee should satisfy themselves by inspection, searches, enquiries and full survey as to the correctness of each statement. Any areas, measurements or distances quoted are approximate and should not be used to value a property or be the basis of any sale or let.

020 7096 9476

contact@landstones.co.uk

Whilst every effort is made to ensure the accuracy of these details, it should be noted that the measurements are approximate only. Floorplans are for representation purposes only and prepared according to the RICS Code of Measuring Practice by our floorplan provider. Therefore, the layout of doors, windows and rooms are approximate and should be regarded as such by any prospective purchaser. Any internal photographs are intended as a guide only and it should not be assumed that any of the furniture/fitings are included in any sale. Where shown, details of lease, ground rent and service charge are provided by the vendor and their accuracy cannot be guaranteed, as the information may not have been verified and further checks should be made either through your solicitor/conveyance. Where appliances, including central heating, are mentioned, it cannot be assumed that they are in working order, as they have not been tested. Please also note that wiring, plumbing and drains have not been checked.