



Old Manor Yard, SW5

Old Manor Yard, SW5

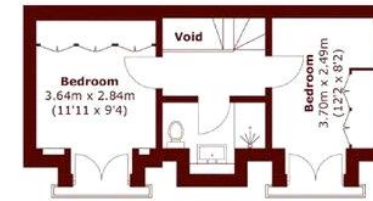
A beautifully refurbished five-bedroom mews house, quietly positioned on a charming gated cul-de-sac. Finished to a high standard throughout, the property offers generous living space ideal for both family life and entertaining.

Old Manor Yard is discreetly tucked away just off Earl's Court Road, providing easy access to a wide range of local amenities. High Street Kensington is also within close proximity, offering an additional selection of shops, cafés, and restaurants.

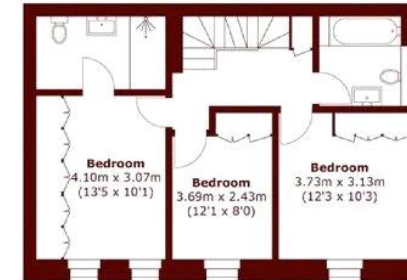
Council Tax Band: G (Kensington and Chelsea)
Deposit: £9,000

Gated Mews, Newly Refurbished, Open Plan Kitchen,
Outdoor Space, Pet Friendly

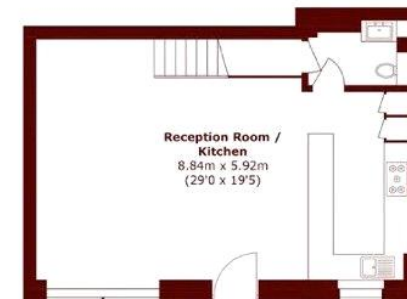
Asking price: £1,500 pw



Second Floor



First Floor



Ground Floor

Total area (approx.): 130.1 sq. m (1,400.3 sq. ft)
(Excluding Void)

020 7096 9476

contact@landstones.co.uk

Whilst every effort is made to ensure the accuracy of these details, it should be noted that the measurements are approximate only. Floorplans are for representation purposes only and prepared according to the RICS Code of Measuring Practice by our floorplan provider. Therefore, the layout of doors, windows and rooms are approximate and should be regarded as such by any prospective tenant.