



Lexham Gardens, W8

Lexham Gardens, W8

A stunning two-bedroom, two-bathroom apartment set on the first floor of a well-maintained period conversion, boasting over three meters of ceiling height and overlooking beautiful communal gardens, as well as benefiting from its own private terrace.

This elegant home perfectly balances contemporary living with classic period features. High ceilings and wooden floors throughout enhance the sense of space and refinement, while the open-plan living area provides an ideal setting for entertaining. Large windows flood the space with natural light, creating a warm and inviting atmosphere. Both bedrooms feature their own en-suite bathrooms, with the principal suite further benefiting from a bathtub and direct access to the private terrace.

Lexham Gardens is a peaceful and highly sought-after address in the heart of Kensington, just south of Kensington High Street. Residents enjoy easy access to boutique shops, fine dining, and excellent transport links, with Kensington High Street, Gloucester Road, and South Kensington stations all within easy reach

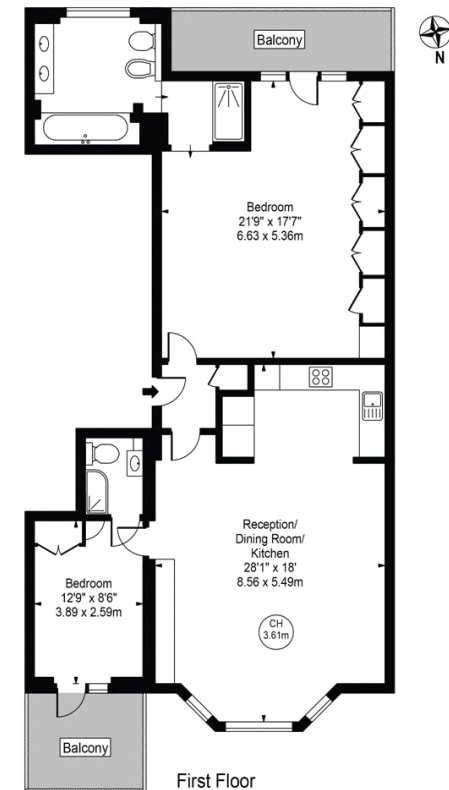
Deposit: £7,800
Garden details: Communal Garden, Terrace

Access To Communal Gardens, High Ceilings & Wood Floors, Open Plan Kitchen, Private Terrace

Asking price: £1,269 pw



Lexham Gardens
Approx. Gross Internal Area 1111 Sq Ft - 103.22 Sq M



First Floor
For Illustration Purposes Only - Not To Scale

This floor plan should be used as a general outline for guidance only and does not constitute in whole or in part an offer or contract. Any intending purchaser or lessee should satisfy themselves by inspection, searches, enquiries and full survey as to the correctness of each statement. Any areas, measurements or distances quoted are approximate and should not be used to value a property or be the basis of any sale or let.

020 7096 9476

contact@landstones.co.uk

Whilst every effort is made to ensure the accuracy of these details, it should be noted that the measurements are approximate only. Floorplans are for representation purposes only and prepared according to the RICS Code of Measuring Practice by our floorplan provider. Therefore, the layout of doors, windows and rooms are approximate and should be regarded as such by any prospective tenant.