



Cromwell Road, SW5

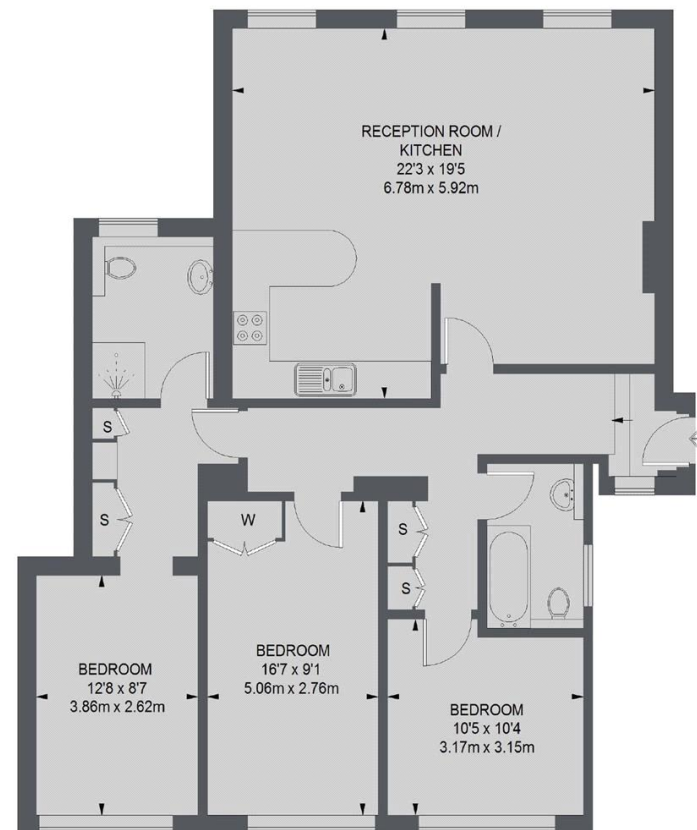
Cromwell Road, SW5

Set on the top floor (with lift) of a well maintained Victorian conversion, the apartment comprises of three double bedrooms, open plan living room and kitchen, en-suite bathroom and additional shower room.

Conveniently located close to Earls Court Underground and just a few minutes walk from High Street Kensington and the buzz of the Old Brompton Road.

Deposit: £6,230

Asking price: £4,500 pcm



TOTAL APPROX. FLOOR AREA
1125 SQ. FT. (104.54 SQ. M.)

020 7096 9476

contact@landstones.co.uk

Whilst every effort is made to ensure the accuracy of these details, it should be noted that the measurements are approximate only. Floorplans are for representation purposes only and prepared according to the RICS Code of Measuring Practice by our floorplan provider. Therefore, the layout of doors, windows and rooms are approximate and should be regarded as such by any prospective tenant.