



Cornwall Gardens, SW7

Cornwall Gardens, SW7

Set on the top floor and overlooking the beautiful Cornwall gardens, this bright two-bedroom apartment of over 700 sq ft offers modern living in a highly sought-after location.

Flooded with natural light from large windows, the flat features an open-plan kitchen and reception area with wooden flooring, creating a contemporary and inviting space ideal for both everyday living and entertaining. Both bedrooms are generously sized and complemented by two stylish marble-style bathrooms, adding a touch of elegance to the home. Residents also enjoy direct access to the landscaped communal gardens, providing a peaceful green retreat in the heart of the city.

Perfectly positioned on Cornwall Gardens, the property is approximately 0.3 miles from Gloucester Road Tube Station, offering excellent transport links and easy access to nearby shops, cafés, bars, and restaurants. Kensington High Street is just 0.6 miles away, with Hyde Park and Kensington Gardens close by. Additional benefits include access to the communal gardens and RBKC resident parking, making this a superb blend of comfort, style, and convenience.

Council Tax Band: G

Deposit: £4,038

Access To Communal Gardens, Air-Conditioning, Bright Apartment , Open Plan Kitchen, Top Floor, Two Bathrooms, Two Double Bedrooms, Wooden Floors

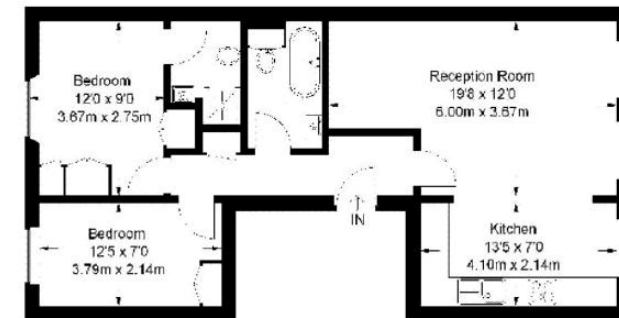
Asking price: £807 pw

020 7096 9476

contact@landstones.co.uk

Cornwall Gardens

Approximate Gross Internal Area
678 sq ft / 63 sq m



Third Floor

Whilst every effort is made to ensure the accuracy of these details, it should be noted that the measurements are approximate only. Floorplans are for representation purposes only and prepared according to the RICS Code of Measuring Practice by our floorplan provider. Therefore, the layout of doors, windows and rooms are approximate and should be regarded as such by any prospective tenant.