



Eardley Crescent, SW5

Eardley Crescent, SW5

Landstones are proud to present this top-floor, split-level three-bedroom apartment with a private panoramic roof terrace, set on one of Earl's Court's most sought-after streets.

Following an extensive renovation, the apartment offers a contemporary open-plan kitchen and living area flooded with natural light through large picture windows. The spacious reception room provides an inviting space for entertaining or relaxing evenings, finished in a clean, modern style that complements the building's period character.

Three generous double bedrooms offer flexibility for families, professionals, this apartment represents an outstanding opportunity to create a truly special London home.

Eardley Crescent is perfectly located between West Brompton Station (District Line & Overground) and Earl's Court Underground Station (District & Piccadilly Lines), providing superb connections across London and to Heathrow Airport. The property is also moments from the vibrant selection of cafés, restaurants, and shops on Old Brompton Road and nearby Fulham Road.

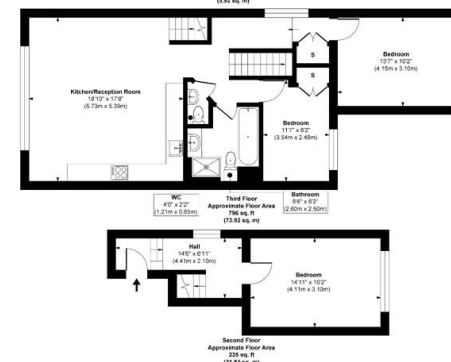
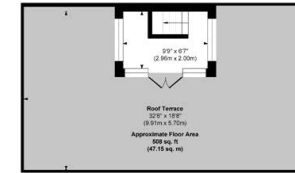
Council Tax Band: F (Kensington and Chelsea)
Tenure: Share of Freehold

Private Rooftop, Three Double Bedrooms, Top Floor Flat, Wooden Floors

Asking price: £1,500,000



HOMEVIEWS DNP
PROPERTY PHOTOGRAPHY & VIDEOS



Approx. Gross Internal Floor Area 1095 sq. ft / 101.68 sq. m (Excluding Roof Terrace)
Illustration for identification purposes only. measurements are approximate, not to scale.
Produced by Elements Property

020 7096 9476

contact@landstones.co.uk

Whilst every effort is made to ensure the accuracy of these details, it should be noted that the measurements are approximate only. Floorplans are for representation purposes only and prepared according to the RICS Code of Measuring Practice by our floorplan provider. Therefore, the layout of doors, windows and rooms are approximate and should be regarded as such by any prospective purchaser. Any internal photographs are intended as a guide only and it should not be assumed that any of the furniture/fitings are included in any sale. Where shown, details of lease, ground rent and service charge are provided by the vendor and their accuracy cannot be guaranteed, as the information may not have been verified and further checks should be made either through your solicitor/conveyance. Where appliances, including central heating, are mentioned, it cannot be assumed that they are in working order, as they have not been tested. Please also note that wiring, plumbing and drains have not been checked.