



Kings Road, SW3

Kings Road, SW3

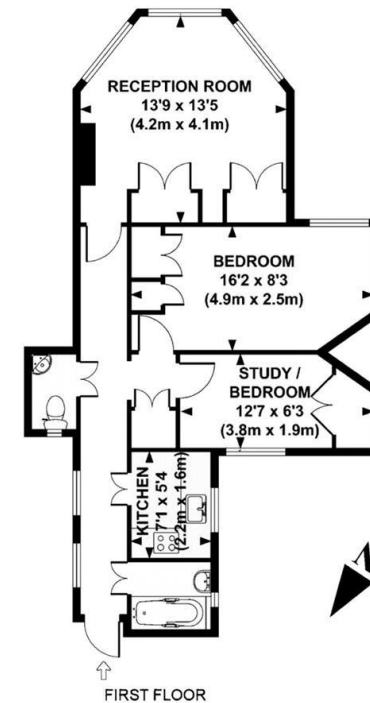
A splendid two bedroom apartment situated on the second floor, at the rear of this well maintained mansion block in the heart of Chelsea.

Alexandra Mansions is situated in the heart of Chelsea on Kings Road and is perfectly positioned for all of the amenities the area has to offer. Both Kings Road and Fulham Road offer supermarkets, independent shops, restaurants and cafes.

Council Tax Band: F (Kensington and Chelsea)
Deposit: £3,875

Prime Location, Recently Refurbished, Separate Kitchen, Pet Friendly

Asking price: £692 pw



APPROX. GROSS INTERNAL FLOOR AREA 564 SQ FT / 52 SQ M
Ref: KFCH0183

This floorplan is for illustration purposes and may not truly reflect design or dimensions and should not be used for valuation or condition purposes.

020 7096 9476

contact@landstones.co.uk

Whilst every effort is made to ensure the accuracy of these details, it should be noted that the measurements are approximate only. Floorplans are for representation purposes only and prepared according to the RICS Code of Measuring Practice by our floorplan provider. Therefore, the layout of doors, windows and rooms are approximate and should be regarded as such by any prospective tenant.