



Barkston Gardens, SW5

Barkston Gardens, SW5

A stunning two-bedroom, two-bathroom apartment set on the first floor of a well-maintained red-brick building on one of Earl's Court's most sought-after garden squares, offering over 1,000 sq ft of living space, impressive ceiling heights, a private balcony, and access to communal gardens.

Designed for modern living, this stylish apartment offers a spacious open-plan layout ideal for entertaining, with floor-to-ceiling windows that fill the space with natural light. A private balcony overlooks the gardens—perfect for a morning coffee or evening relaxation.

Finished to a high contemporary standard, it seamlessly blends period charm with modern comfort. Thoughtful storage solutions throughout make it both practical and elegant.

Ideally positioned on Barkston Gardens, residents benefit from the cafés, restaurants, and boutique shops of Earl's Court and South Kensington. Earl's Court Underground Station (District & Piccadilly lines) is moments away, offering excellent connections across London and direct access to Heathrow.

Tenure: Share of Freehold
Service Charge:

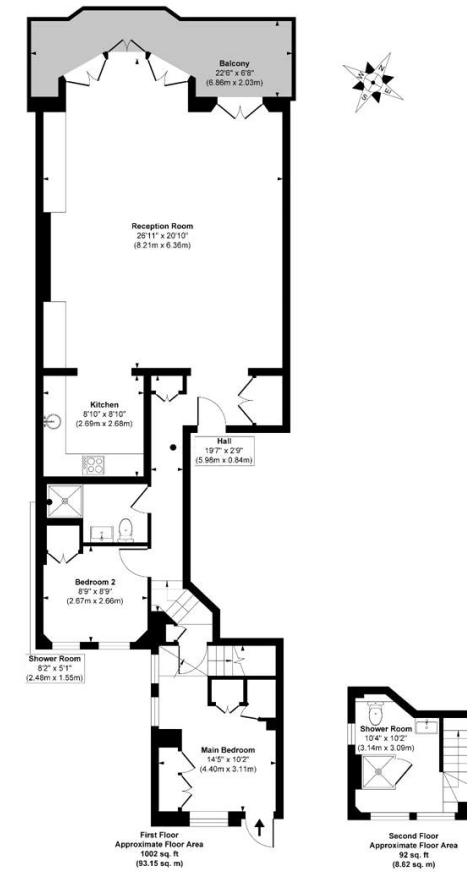
Balcony, Over 1000 sqft, Private Communal Garden, High Ceilings, Open Plan Kitchen

Asking price: £1,750,000



Flat 2, 51 Barkston Gardens, SW5 0ES

HOMEVIEWS DNP



Approx. Gross Internal Floor Area 1094 sq. ft / 101.77 sq. m

Illustration for identification purposes only, measurements are approximate, not to scale.
Produced by Elements Property

020 7096 9476

contact@landstones.co.uk

Whilst every effort is made to ensure the accuracy of these details, it should be noted that the measurements are approximate only. Floorplans are for representation purposes only and prepared according to the RICS Code of Measuring Practice by our floorplan provider. Therefore, the layout of doors, windows and rooms are approximate and should be regarded as such by any prospective purchaser. Any internal photographs are intended as a guide only and it should not be assumed that any of the furniture/fitings are included in any sale. Where shown, details of lease, ground rent and service charge are provided by the vendor and their accuracy cannot be guaranteed, as the information may not have been verified and further checks should be made either through your solicitor/conveyance. Where appliances, including central heating, are mentioned, it cannot be assumed that they are in working order, as they have not been tested. Please also note that wiring, plumbing and drains have not been checked.