



Stanhope Terrace, W2

Stanhope Terrace, W2

Offered on a Short-Let basis, just a minute's walk from Hyde Park, this modern four-bedroom house offers generous living space arranged across four floors.

The property includes four well-sized bedrooms, a bright reception room, a separate dining area, and a fully fitted kitchen with a utility room. Wooden flooring throughout adds a contemporary touch, while ample storage ensures both comfort and practicality.

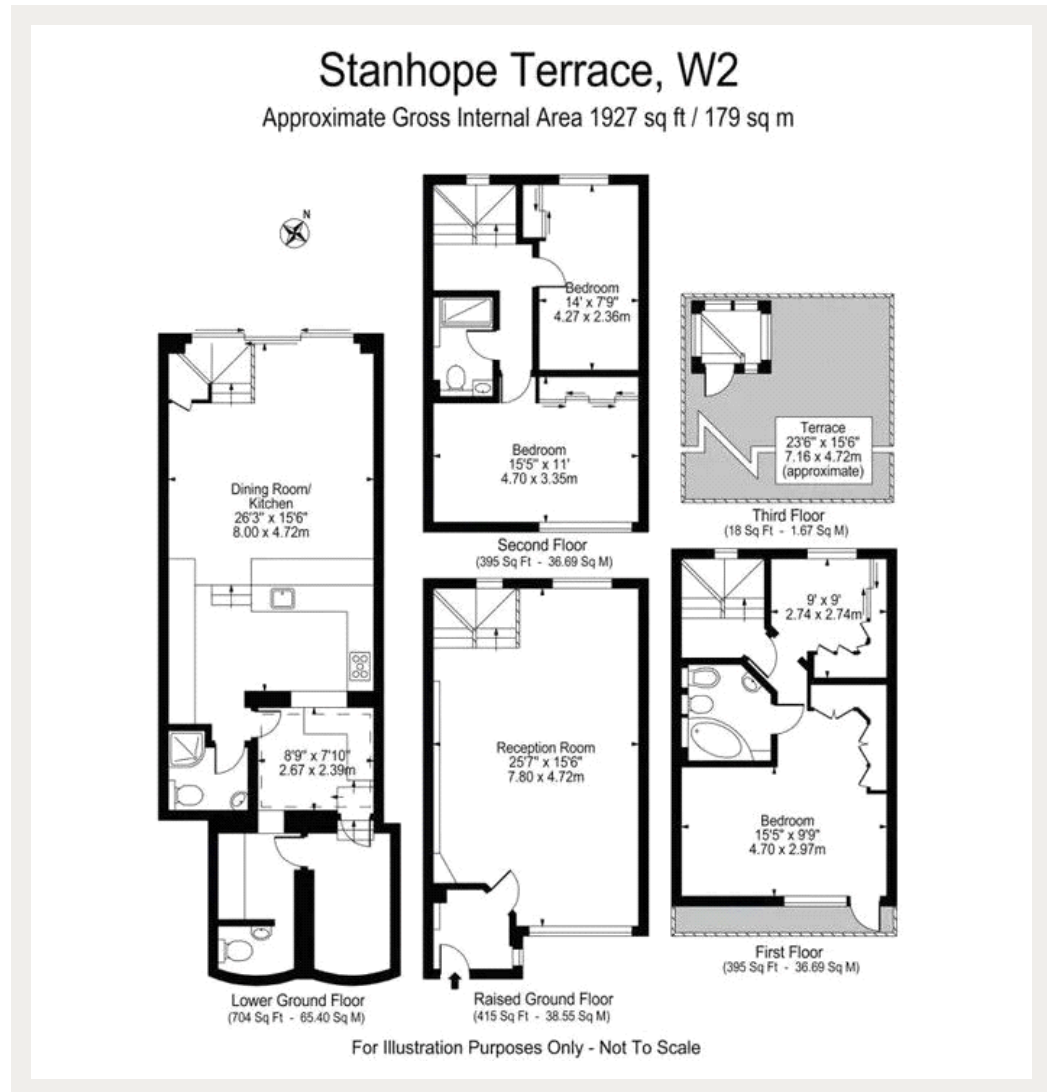
A private rooftop terrace provides a rare opportunity to enjoy outdoor living in the heart of London, making it perfect for relaxing or entertaining. With over 1,900 sq ft of space, this home is ideal for families, professionals, or students looking for a central yet tranquil setting.

Located close to Connaught Village with its boutique shops and restaurants, the house also benefits from excellent transport connections, placing the rest of London within easy reach.

Council Tax Band: H
Deposit: £15,166

Air Conditioning, Family House, Private Rooftop, Views Over Hyde Park, Wooden Floors, All Bills Inclusive

Asking price: £3,500 pw



Whilst every effort is made to ensure the accuracy of these details, it should be noted that the measurements are approximate only. Floorplans are for representation purposes only and prepared according to the RICS Code of Measuring Practice by our floorplan provider. Therefore, the layout of doors, windows and rooms are approximate and should be regarded as such by any prospective tenant.

020 7096 9476

contact@landstones.co.uk