



Kempsford Gardens, SW5

Kempsford Gardens, SW5

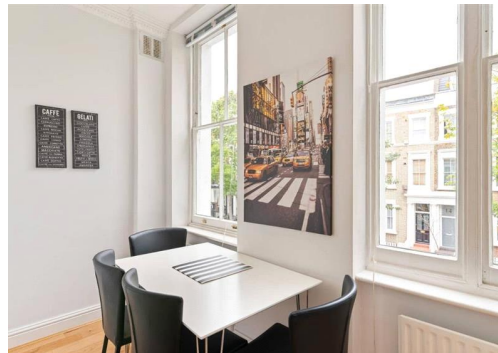
A modern and immaculately presented two double bedroom, two bathroom apartment set on the first floor of this attractive period building moments from Earl's Court tube station.

Kempsford Gardens is ideally located between West Brompton and Earl's Court tube stations, also moments away from the many shops, bars and restaurants of Earl's Court and Chelsea.

Deposit: £3,125

Two Double Bedrooms, Two Bathrooms, Wooden Floors, Separate Kitchen, First Floor Flat

Asking price: £625 pw



020 7096 9476

contact@landstones.co.uk

Whilst every effort is made to ensure the accuracy of these details, it should be noted that the measurements are approximate only. Floorplans are for representation purposes only and prepared according to the RICS Code of Measuring Practice by our floorplan provider. Therefore, the layout of doors, windows and rooms are approximate and should be regarded as such by any prospective tenant.