



Palace Gate, W2

Palace Gate, W2

Landstones are proud to offer for sale this stunning penthouse apartment with unrivalled panoramic views over Hyde Park and Kensington Palace.

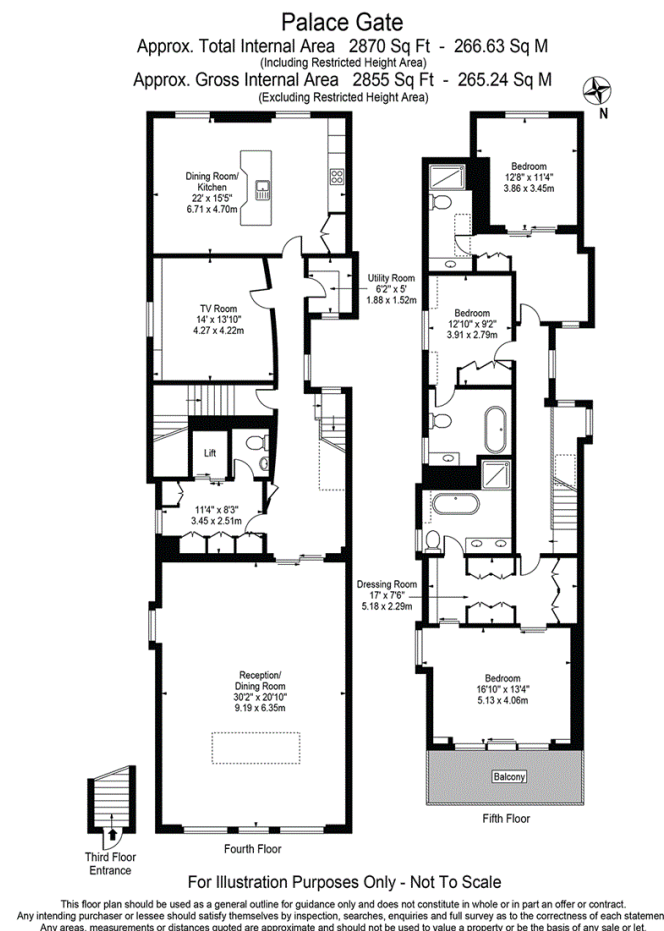
Sitting atop an impressive white stucco Georgian mansion this spacious lateral open plan penthouse offers two floor of exquisite luxurious living quietly hidden away above all the hustle and bustle below.

Accessed directly via the lift the property is split over two floors and perfectly laid out for grand entertaining but also cosy and discreet for hiding away in the very heart of Kensington. To the front of the property enjoying the stunning views is the large open reception room with ample space for dining. Also on this floor is a spacious open plan kitchen with large dinning table perfect for those quiet family dinners.

As you move up the stairs onto the bedroom floor you have a carefully laid out master bedroom suite with private terrace overlooking Hyde Park, large walk through wardrobe and beautifully appointed master bathroom with a stand alone contact lens bathtub. Two further large double bedrooms are also located on this floor, both with large ensuite bathrooms. The small of these two rooms has been set out to perform as a perfect

The attention to detail of this property is unmatched from the stunning custom walnut joinery feature wall in the atrium to the walk through wardrobe in the master bedroom and stunning wooden floors with underfloor heating. The kitchen is fitted with Gaggenau appliances and the property is also controlled from a comprehensive home automation system.

Palace Gate is perfectly located for easy access to West London's most desirable amenities you'll have easy access to the neighbourhood's renowned cultural institutions, upscale shopping, and world-class dining. Hyde Park, Kensington Gardens, and some of London's most iconic museums are just a short stroll away.



020 7096 9476

contact@landstones.co.uk

Whilst every effort is made to ensure the accuracy of these details, it should be noted that the measurements are approximate only. Floorplans are for representation purposes only and prepared according to the RICS Code of Measuring Practice by our floorplan provider. Therefore, the layout of doors, windows and rooms are approximate and should be regarded as such by any prospective purchaser. Any internal photographs are intended as a guide only and it should not be assumed that any of the furniture/fittings are included in any sale. Where shown, details of lease, ground rent and service charge are provided by the vendor and their accuracy cannot be guaranteed, as the information may not have been verified and further checks should be made either through your solicitor/conveyance. Where appliances, including central heating, are mentioned, it cannot be assumed that they are in working order, as they have not been tested. Please also note that wiring, plumbing and drains have not been checked.