



Queen's Gate, SW7

Queen's Gate, SW7

An immaculate three-bedroom duplex apartment offering bright interiors, a high-standard finish throughout and a convenient location within easy reach of the amenities and shops in South Kensington.

Queens Gate runs between Hyde Park and Old Brompton Road and is also close to both Gloucester Road and Kensington High Street which offers plenty of shops, restaurants and cafes. Kensington Gardens and Hyde Park are a short walk away. The nearest underground station is Gloucester Road (District, Circle and Piccadilly lines). Motorists will benefit from rapid routes to the West and Heathrow Airport via the M4.

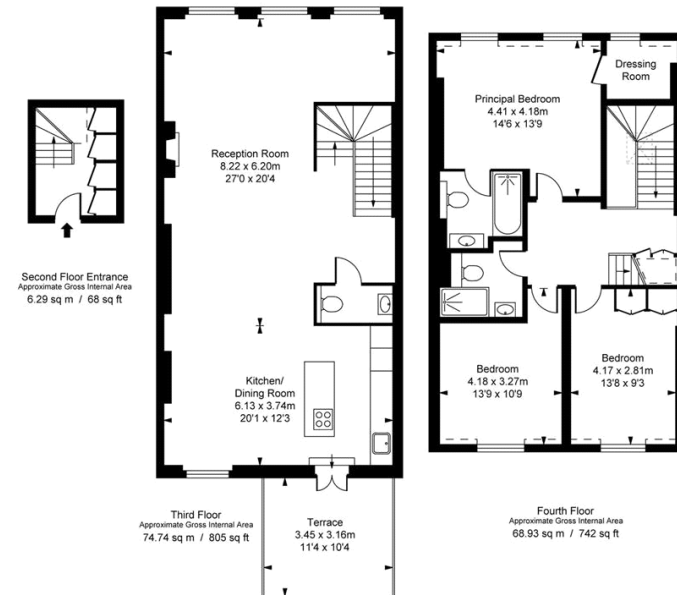
Council Tax Band: G
Deposit: £12,000

Pet Friendly

Asking price: £2,000 pw



Queens Gate, SW7
Approximate Gross Internal Area
149.96 sq m / 1,614 sq ft
(Including restricted height
under 1.5m)



This plan is not to scale. It is for guidance and not for valuation purposes.
All measurements and areas are approximate only, and have been prepared in accordance with the current edition of the RICS Code of Measuring Practice.
© Fulham Performance

020 7096 9476

contact@landstones.co.uk

Whilst every effort is made to ensure the accuracy of these details, it should be noted that the measurements are approximate only. Floorplans are for representation purposes only and prepared according to the RICS Code of Measuring Practice by our floorplan provider. Therefore, the layout of doors, windows and rooms are approximate and should be regarded as such by any prospective tenant.