



**Parkgate Road, SW11**

## Parkgate Road, SW11

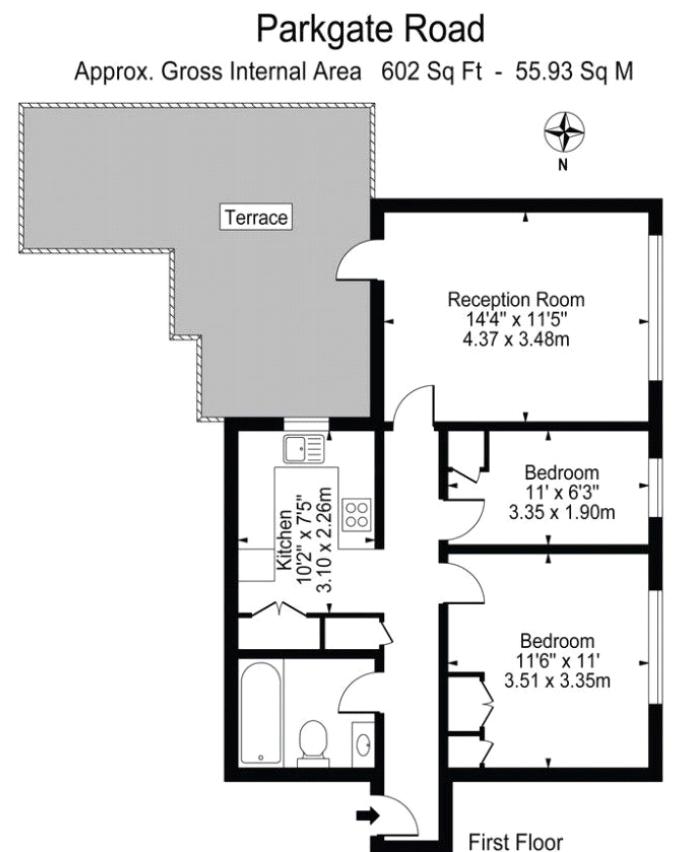
A beautiful converted three-bedroom flat set on the first floor of this purpose built block. Perfect property for sharers.

Situated opposite Battersea Park, close to the many lively bars and restaurants that Chelsea & Battersea have to offer.

Council Tax Band: E  
Deposit: £3,375  
Garden details: Private Garden

Living Room Converted Into Bedroom, Communal Terrace, Wooden Floors, Lift Access

**Asking price:** £675 pw



For Illustration Purposes Only - Not To Scale

This floor plan should be used as a general outline for guidance only and does not constitute in whole or in part an offer or contract.  
Any intending purchaser or lessee should satisfy themselves by inspection, searches, enquiries and full survey as to the correctness of each statement.  
Any areas, measurements or distances quoted are approximate and should not be used to value a property or be the basis of any sale or let.

020 7096 9476

contact@landstones.co.uk

Whilst every effort is made to ensure the accuracy of these details, it should be noted that the measurements are approximate only. Floorplans are for representation purposes only and prepared according to the RICS Code of Measuring Practice by our floorplan provider. Therefore, the layout of doors, windows and rooms are approximate and should be regarded as such by any prospective tenant.