



Frederick Close, W2



## Frederick Close, W2

Landstones is delighted to present this truly unique and breathtaking two-bedroom apartment of over 1,900 sq ft, located within a well-maintained portered block.

Designed around a beautiful internal patio, this exceptional home offers a rare sense of space, light, and tranquillity in the heart of London. The layout seamlessly blends indoor and outdoor living, with large open-plan reception areas and an elegant kitchen ideal for both relaxing and entertaining. Both bedrooms benefit from luxurious en-suite bathrooms, ensuring privacy and comfort throughout.

The apartment also features air conditioning, an integrated sound system, a parking space, and high-quality finishes, combining contemporary convenience with refined style.

Frederick Close is nestled within the highly desirable Connaught Triangle, less than 100 metres from the 350 acres of Hyde Park. Being a quiet no-through road, it offers rare calm and privacy in Prime Central London, while remaining perfectly positioned for the capital's most exclusive boutiques, restaurants, and cultural landmarks.

Oxford Street and Mayfair are only a short stroll away, and excellent transport connections include Marble Arch Station (Central Line) just 250m away, with Paddington Station approximately 0.7 miles for national and international travel.

A truly distinctive property that combines contemporary design, luxury, and serenity, a rare find in one of London's most sought-after locations.

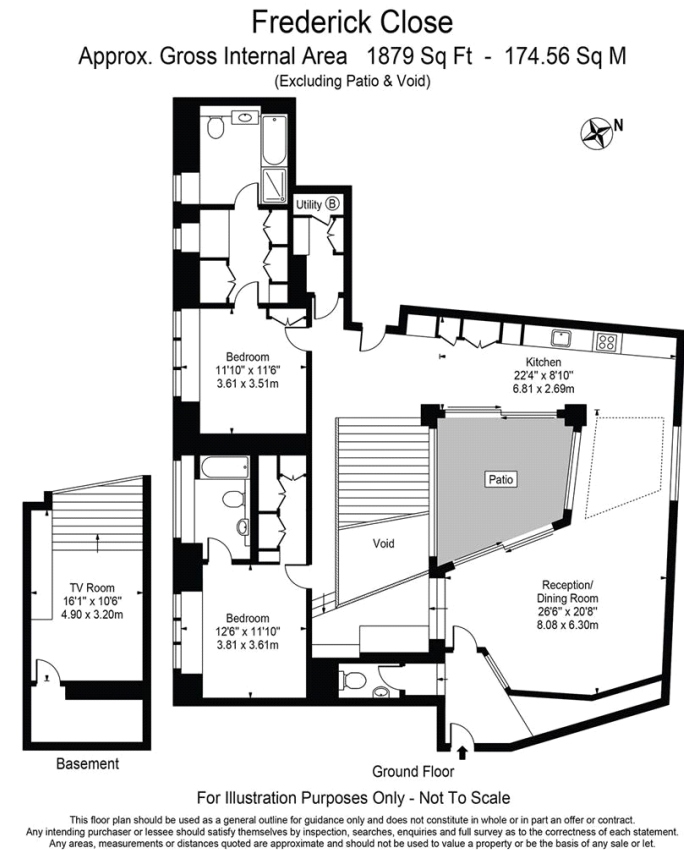
Council Tax Band: H  
Deposit: £15,228

Air Conditioning, Allocated Parking, CCTV, Porter,  
Integrated Sound System, Outdoor Space

**Asking price:** £2,538 pw

**020 7096 9476**

**contact@landstones.co.uk**



Whilst every effort is made to ensure the accuracy of these details, it should be noted that the measurements are approximate only. Floorplans are for representation purposes only and prepared according to the RICS Code of Measuring Practice by our floorplan provider. Therefore, the layout of doors, windows and rooms are approximate and should be regarded as such by any prospective tenant.