



Edgware Road, W2

Edgware Road, W2

This bright one-bedroom flat on the fourth floor (with lift) offers modern finishes and the convenience of a porter.

Spread across 540 sq ft, the apartment benefits from a well-designed, practical layout that maximises space and natural light. It features elegant wooden flooring, ample storage, and clean contemporary finishes, making it an ideal home for professionals or anyone seeking a refined central London base.

Perfectly positioned, the flat is just moments from a wide variety of shops, cafés, and restaurants. With outstanding transport links via Edgware Road, Marble Arch, and Paddington stations, you'll enjoy effortless access across central London and beyond. The renowned boutiques and village charm of Marylebone High Street are also nearby, offering the perfect blend of convenience and luxury.

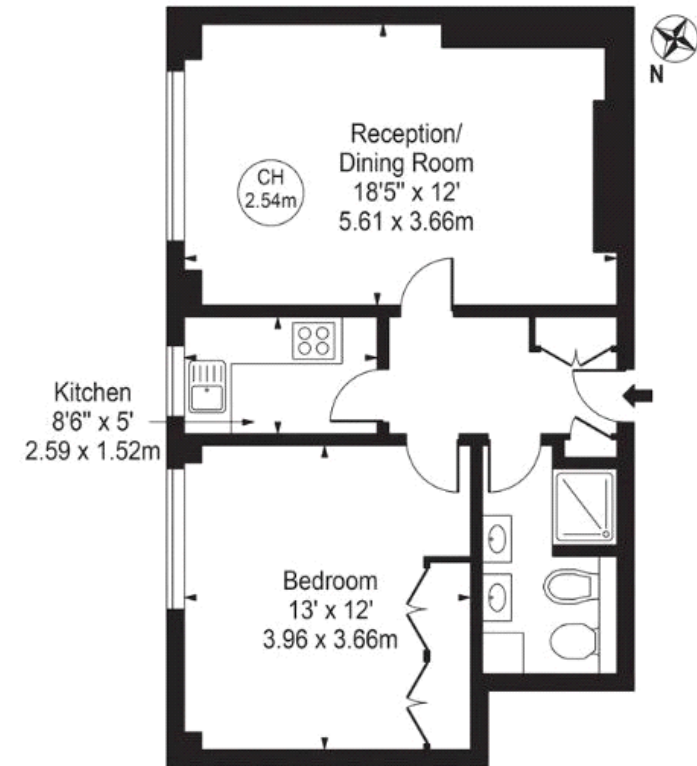
A fantastic opportunity to secure a bright, well-laid-out home in one of London's most desirable neighbourhoods.

Deposit: £3,920

Asking price: £750 pw



Forset Court
Approx. Gross Internal Area 540 Sq Ft - 50.17 Sq M



Fourth Floor

For Illustration Purposes Only - Not To Scale

This floor plan should be used as a general outline for guidance only and does not constitute in whole or in part an offer or contract. Any intending purchaser or lessee should satisfy themselves by inspection, searches, enquiries and full survey as to the correctness of each statement. Any areas, measurements or distances quoted are approximate and should not be used to value a property or be the basis of any sale or let.

020 7096 9476

contact@landstones.co.uk

Whilst every effort is made to ensure the accuracy of these details, it should be noted that the measurements are approximate only. Floorplans are for representation purposes only and prepared according to the RICS Code of Measuring Practice by our floorplan provider. Therefore, the layout of doors, windows and rooms are approximate and should be regarded as such by any prospective tenant.