



Queen's Gate, SW7



## Queen's Gate, SW7

A stunning two-bedroom apartment set within a beautiful transitional white stucco building on prestigious Queen's Gate, one of South Kensington's most sought-after addresses.

Benefitting from its own private entrance, this well-proportioned two-bedroom, two-bathroom home offers an excellent sense of privacy and independence. Both bedrooms are generously sized, providing comfortable spaces to relax and unwind. The principal bedroom benefits from an en suite bathroom, adding to the overall convenience of the apartment.

The versatile second bedroom is ideal as a guest room or home office and features built-in storage, making the space both practical and adaptable for modern living.

Set on one of South Kensington's most prestigious tree-lined boulevards, Queen's Gate runs between Hyde Park and Old Brompton Road, placing the property within easy reach of world-class museums, green spaces, restaurants, and both South Kensington and Gloucester Road stations. The building itself is elegant and immaculately maintained, with impressive communal areas and lift access for added convenience.

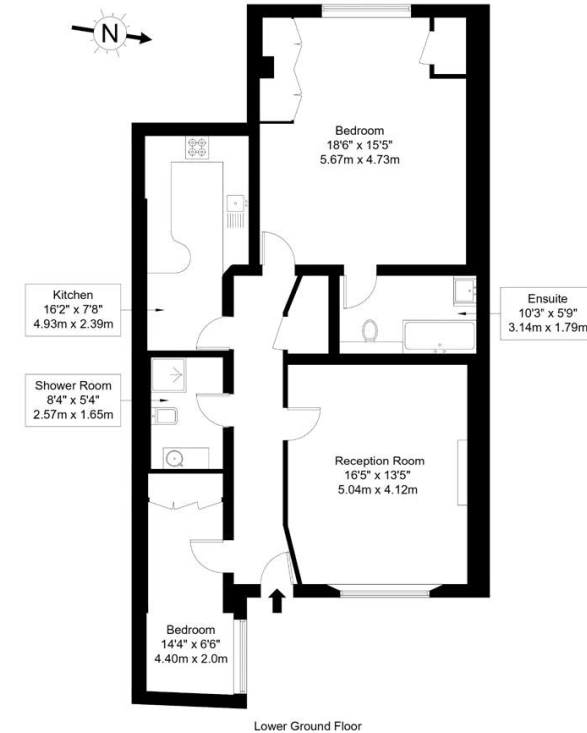
Close to Hyde Park, Period Building, Prime Location

**Asking price:** £975,000



### Queen's Gate, SW7 5JP

Approx Gross Internal Area = 94.03 sq m / 1012 sq ft



Ref :

Copyright **BLEUPLAN**

The Floor plan is not to scale and measurements and areas shown are approximate and therefore should be used for illustrative purposes only. The plan has been prepared in accordance with the RICS code of Measuring Practice and whilst we have confidence in the information produced it must not be relied on. Maximum lengths and widths are represented on the floor plan. If there is any aspect of particular importance, you should carry out or commission your own inspection of the property.  
Copyright @ BLEUPLAN

020 7096 9476

[contact@landstones.co.uk](mailto:contact@landstones.co.uk)

Whilst every effort is made to ensure the accuracy of these details, it should be noted that the measurements are approximate only. Floorplans are for representation purposes only and prepared according to the RICS Code of Measuring Practice by our floorplan provider. Therefore, the layout of doors, windows and rooms are approximate and should be regarded as such by any prospective purchaser. Any internal photographs are intended as a guide only and it should not be assumed that any of the furniture/fittings are included in any sale. Where shown, details of lease, ground rent and service charge are provided by the vendor and their accuracy cannot be guaranteed, as the information may not have been verified and further checks should be made either through your solicitor/conveyance. Where appliances, including central heating, are mentioned, it cannot be assumed that they are in working order, as they have not been tested. Please also note that wiring, plumbing and drains have not been checked.