



Basil Street, SW3

Basil Street, SW3

Introducing this luxurious two-bedroom apartment located in the prestigious Lincoln House on Basil Street, Knightsbridge. This stunning apartment offers a prime location with easy access to the best shopping, dining, and entertainment that London has to offer.

As you enter the apartment, you are immediately struck by the high-end finishes and attention to detail. The living area features large windows that flood the space with natural light, creating a warm and inviting atmosphere. The modern and stylish furnishings complement the sleek design of the apartment, offering a comfortable and sophisticated living experience.

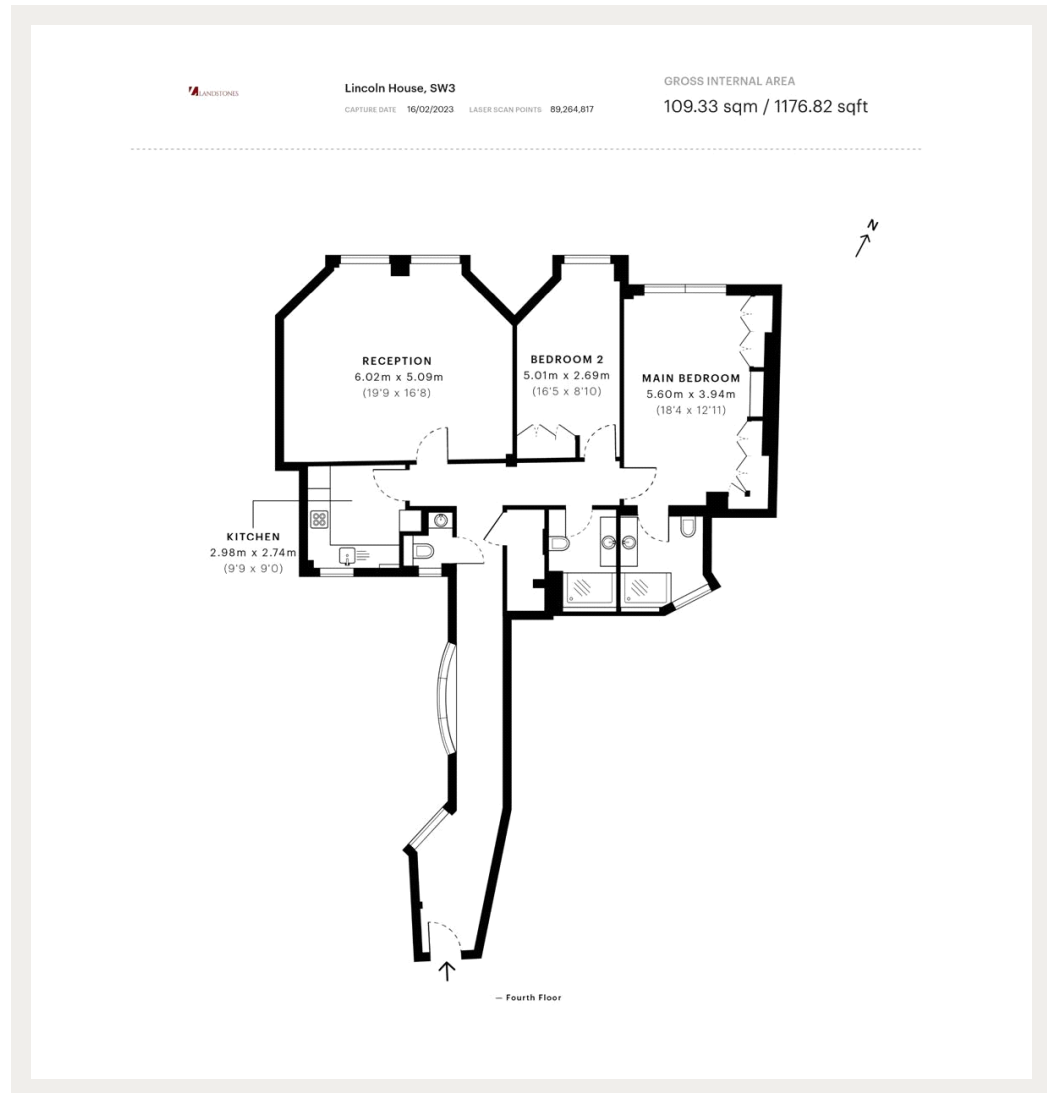
The apartment boasts two spacious double bedrooms. The master bedroom is particularly impressive, offering a king-size bed, ample closet space, and a luxurious en-suite bathroom with a large walk-in shower. The second bedroom features a double bed and is serviced by the separate family bathroom.

The separate kitchen is fully equipped with high-end appliances, making it a joy to cook in. The dining area is adjacent to the kitchen, providing a comfortable and elegant space to enjoy meals with friends and family.

The apartment also benefits from a large utility room with stacked washer and separate dryer. Ideal for keeping clothes and linen washing out of site and away from the living areas.

Residents of Lincoln House have access to a range of on-site amenities, including a porter and a lift. The building also benefits from a prime location in the heart of Knightsbridge, just a short walk from Harrods and some of London's most exclusive restaurants and shops.

In summary, this two-bedroom apartment in Lincoln House offers a rare opportunity to experience luxury living in one of London's most desirable neighbourhoods. With high-end finishes, impeccable attention to detail, and a prime



Whilst every effort is made to ensure the accuracy of these details, it should be noted that the measurements are approximate only. Floorplans are for representation purposes only and prepared according to the RICS Code of Measuring Practice by our floorplan provider. Therefore, the layout of doors, windows and rooms are approximate and should be regarded as such by any prospective purchaser. Any internal photographs are intended as a guide only and it should not be assumed that any of the furniture/fitings are included in any sale. Where shown, details of lease, ground rent and service charge are provided by the vendor and their accuracy cannot be guaranteed, as the information may not have been verified and further checks should be made either through your solicitor/conveyance. Where appliances, including central heating, are mentioned, it cannot be assumed that they are in working order, as they have not been tested. Please also note that wiring, plumbing and drains have not been checked.

020 7096 9476

contact@landstones.co.uk