



Marylebone Road, NW1

## Marylebone Road, NW1

A spacious four-bedroom apartment spanning over 1,338 sq ft of lateral living space, set on the second floor of a well-maintained mansion block in the heart of Marylebone.

The property offers four generous and versatile bedrooms, two large bathrooms, a separate kitchen, and two reception rooms providing flexibility for both family living and entertaining. The building further benefits from a porter and lift, adding convenience and accessibility for residents.

Manor House is ideally located on Marylebone Road, just a short walk from Marylebone Station, offering nationwide rail services and Bakerloo Line access across London. Edgware Road Station is also within easy reach, served by the Hammersmith & City, Circle, and District Lines.

For those who enjoy open green spaces, Regent's Park is nearby offering a peaceful escape from the bustle of city life while keeping you moments from Marylebone's vibrant shops, cafés, and restaurants.

Council Tax Band: F (Kensington and Chelsea)  
Tenure: Leasehold

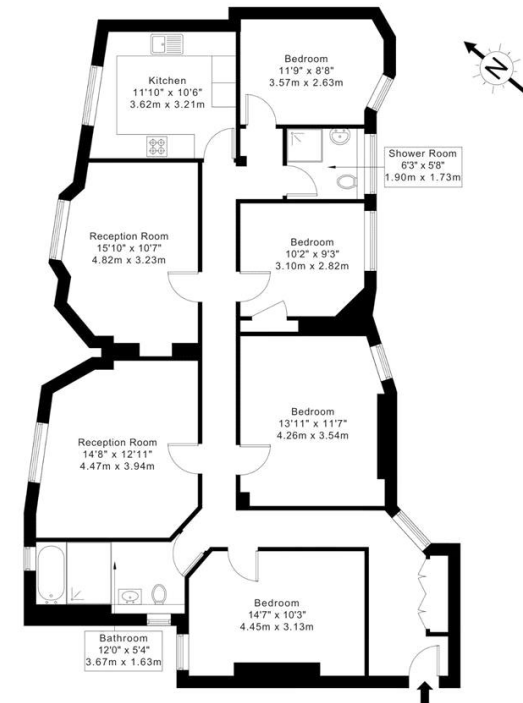
Well Maintained Mansion Block, Porter, Lift, Excellent Transport

**Asking price:** £1,160,000



## Marylebone Road, NW1 5NP

Approx Gross Internal Area = 124.33 sq m / 1338 sq ft



Ref :

Copyright **BLEU PLAN**

The Floor plan is not to scale and measurements and areas shown are approximate and therefore should be used for illustrative purposes only. The plan has been prepared in accordance with the RICS code of Measuring Practice and whilst we have confidence in the information produced it must not be relied on. Maximum lengths and widths are represented on the floor plan. If there is any aspect of particular importance, you should carry out or commission your own inspection of the property.

Copyright © BleuPlan

Whilst every effort is made to ensure the accuracy of these details, it should be noted that the measurements are approximate only. Floorplans are for representation purposes only and prepared according to the RICS Code of Measuring Practice by our floorplan provider. Therefore, the layout of doors, windows and rooms are approximate and should be regarded as such by any prospective purchaser. Any internal photographs are intended as a guide only and it should not be assumed that any of the furniture/fittings are included in any sale. Where shown, details of lease, ground rent and service charge are provided by the vendor and their accuracy cannot be guaranteed, as the information may not have been verified and further checks should be made either through your solicitor/conveyance. Where appliances, including central heating, are mentioned, it cannot be assumed that they are in working order, as they have not been tested. Please also note that wiring, plumbing and drains have not been checked.