



Merchant Square East, W2

Merchant Square East, W2

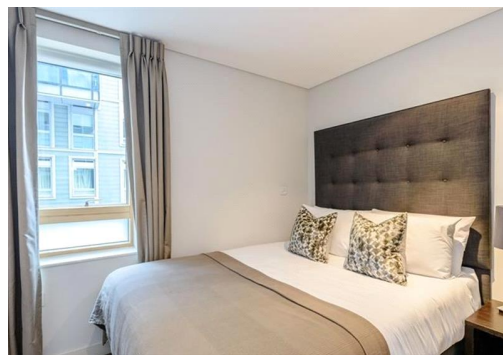
A stunning one bedroom interior designed apartment located on the 5th floor within this prestigious development set within the heart of Paddington Basin.

The building itself is located in the Paddington Basin and features a concierge, lift service and secure underground parking is included. The apartment offers easy access to superb transport links such as Paddington Train Station (Bakerloo, Hammersmith & City, Circle, District lines and Heathrow express) Edgware Road (Circle, District and Bakerloo lines). EPC rating B. Tenant fees may apply.

Council Tax Band: D
Deposit: £3,750

24/7 Concierge and Security, Allocated Parking, Fifth Floor Flat, Lift Access, Pet Friendly

Asking price: £720 pw



020 7096 9476

contact@landstones.co.uk

Whilst every effort is made to ensure the accuracy of these details, it should be noted that the measurements are approximate only. Floorplans are for representation purposes only and prepared according to the RICS Code of Measuring Practice by our floorplan provider. Therefore, the layout of doors, windows and rooms are approximate and should be regarded as such by any prospective tenant.