



Orsett Terrace, W2

Orsett Terrace, W2

Landstones are pleased to present to the market this charming apartment with rare outside space, set within the Grade II listed Orsett House on Orsett Terrace, Paddington.

The apartment offers a bright and spacious reception room opening onto three private terraces- perfect for entertaining or enjoying al fresco living. A separate, fully equipped kitchen adds practicality, while the generous principal bedroom benefits from an en suite bathroom and walk-in wardrobe. Additional features include a guest WC, study, and a utility room, ensuring both comfort and functionality.

Orsett House, designed by architect George Ledwell Taylor, is an elegant example of Italianate style with stucco-rendered facades, reflecting the timeless character of this highly regarded terrace.

Located on a quiet, picturesque street in the heart of Paddington, just a short walk from Paddington Station, which provides mainline services nationwide, direct connections to Heathrow Airport via the Elizabeth Line, and excellent underground links across London.

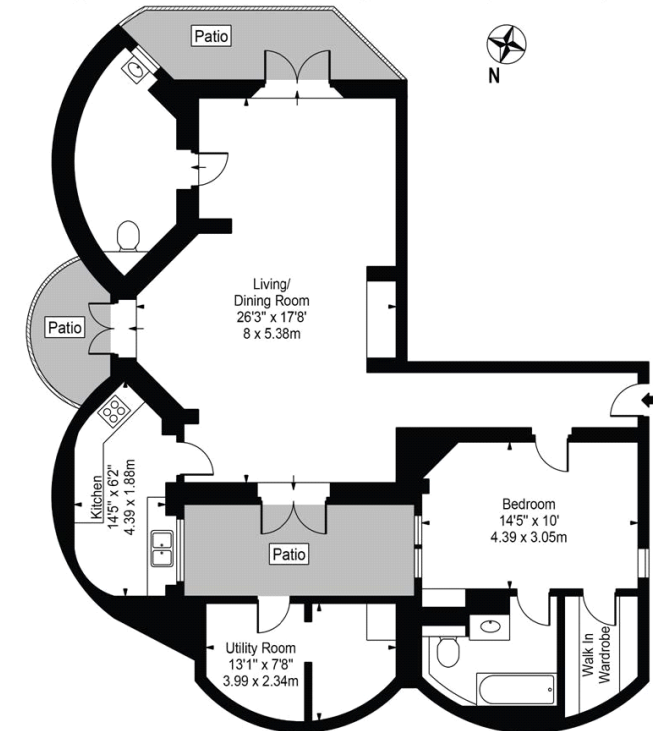
Tenure: Share of Freehold (995 years)
Garden details: Terrace

Close to Hyde Park, Excellent Transport Links, Outside Space, Separate Kitchen, Well Maintained Building

Asking price: £735,000



Orsett House
Approx. Total Internal Area 1051 Sq Ft - 97.64 Sq M
(Including Utility Room)
Approx. Gross Internal Area Of Utility Room 92 Sq Ft - 8.55 Sq M



Lower Ground Floor
For Illustration Purposes Only - Not To Scale

This floor plan should be used as a general outline for guidance only and does not constitute in whole or in part an offer or contract. Any intending purchaser or lessee should satisfy themselves by inspection, searches, enquiries and full survey as to the correctness of each statement. Any areas, measurements or distances quoted are approximate and should not be used to value a property or be the basis of any sale or let.

020 7096 9476

contact@landstones.co.uk

Whilst every effort is made to ensure the accuracy of these details, it should be noted that the measurements are approximate only. Floorplans are for representation purposes only and prepared according to the RICS Code of Measuring Practice by our floorplan provider. Therefore, the layout of doors, windows and rooms are approximate and should be regarded as such by any prospective purchaser. Any internal photographs are intended as a guide only and it should not be assumed that any of the furniture/fittings are included in any sale. Where shown, details of lease, ground rent and service charge are provided by the vendor and their accuracy cannot be guaranteed, as the information may not have been verified and further checks should be made either through your solicitor/conveyance. Where appliances, including central heating, are mentioned, it cannot be assumed that they are in working order, as they have not been tested. Please also note that wiring, plumbing and drains have not been checked.