



**The Knightsbridge Apartments, Knightsbridge,
SW7**

The Knightsbridge Apartments, Knightsbridge, SW7

A stunning lateral three double bedroom apartment with sweeping views over the capital laid out across the eighth floor within this highly desirable Knightsbridge apartment building including a 24/7 concierge, underground carpark, spa, gym with access to a team of personal trainers.

The Knightsbridge Apartments at 199 Knightsbridge is one of the most prestigious buildings in London and it provides doormen and 24 hour security and concierge service. Residents benefit from a newly upgraded gym and spa facilities including a 20 metre swimming pool, hot tubs, sauna and treatment rooms. Further services extend to valet parking, meeting rooms, housekeeping and laundry by arrangement. These superb residences are situated in the heart of Knightsbridge close to many shops, restaurants, transport links as well as the open space of Hyde Park.

Council Tax Band: H
Deposit: £33,000
Parking options: Off Street

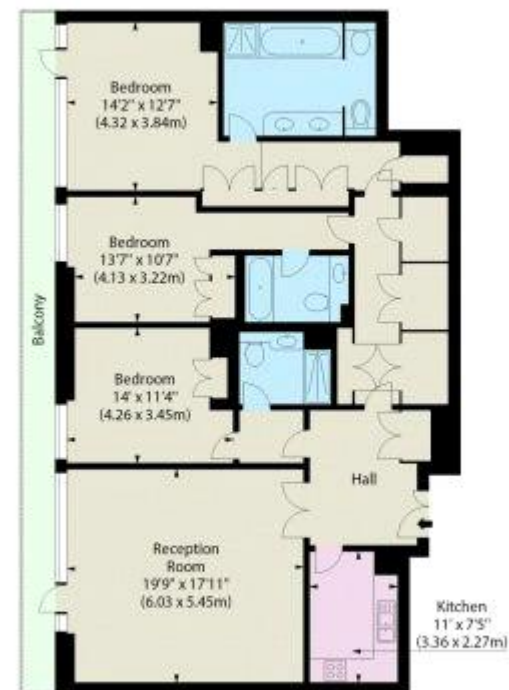
24/7 Concierge, Gym, Pool and Sauna, Outdoor Space,
Secure Underground Parking

Asking price: £5,500 pw



The Knightsbridge, Knightsbridge, SW7

Approx. Gross Internal Area *
1630 Sq Ft - 151.43 Sq M



Eighth Floor

Illustration For Identification Purposes Only. Not To Scale
*Floorplan Drawn According To RICS Guidelines
© www.alanaken.com 2015

Whilst every effort is made to ensure the accuracy of these details, it should be noted that the measurements are approximate only. Floorplans are for representation purposes only and prepared according to the RICS Code of Measuring Practice by our floorplan provider. Therefore, the layout of doors, windows and rooms are approximate and should be regarded as such by any prospective tenant.

020 7096 9476

contact@landstones.co.uk