



**Kempsford Gardens, SW5**

## Kempsford Gardens, SW5

An elegant split-level three-bedroom apartment set on the top floor of a well-maintained Victorian period conversion. Presented to a high standard throughout, the property offers excellent natural light and a private terrace.

Upon entering, the apartment immediately feels bright and well balanced, with wooden flooring running throughout and a layout that offers both comfort and versatility. There are three generous double bedrooms, including a principal bedroom with en suite. The remaining two bedrooms are both well-proportioned, a rarity for similar properties, and all benefit from built-in storage. Additional hallway storage further enhances practicality, making the apartment well suited to family living or flexible use.

The top floor opens into a spacious dual-aspect open-plan reception room, flooded with natural light and ideal for both relaxing and entertaining. The kitchen is centred around a stylish island, creating a sociable focal point, while doors lead out onto a private terrace, perfect for enjoying warmer months.

Kempsford Gardens is ideally positioned between West Brompton station and Earl's Court Underground Station, offering excellent connections across London. The property is also just moments from the vibrant selection of shops, bars, and restaurants in Earl's Court and Chelsea.

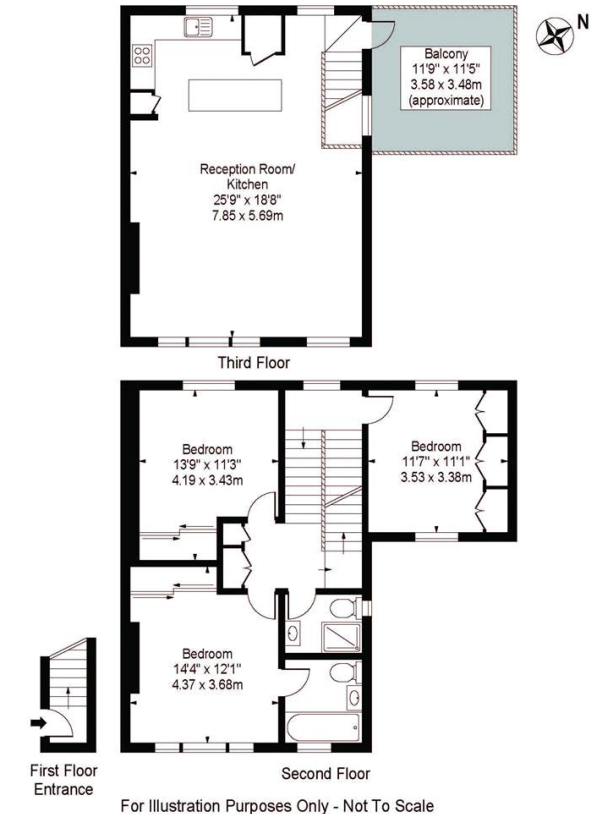
Council Tax Band: D (Kensington and Chelsea)  
Tenure: Share of Freehold  
Garden details: Terrace

Roof Terrace, Split Level, Top Floor Flat, Private Storage Vault

**Asking price: £1,295,000**



### Kempsford Gardens, SW5 9LA Approx. Gross Internal Area 1318 Sq Ft - 122.44 Sq M



This floor plan should be used as a general outline for guidance only and does not constitute in whole or in part an offer or contract. Any intending purchaser or lessee should satisfy themselves by inspection, searches, enquiries and full survey as to the correctness of each statement. Any areas, measurements or distances quoted are approximate and should not be used to value a property or be the basis of any sale or let.

020 7096 9476

contact@landstones.co.uk

Whilst every effort is made to ensure the accuracy of these details, it should be noted that the measurements are approximate only. Floorplans are for representation purposes only and prepared according to the RICS Code of Measuring Practice by our floorplan provider. Therefore, the layout of doors, windows and rooms are approximate and should be regarded as such by any prospective purchaser. Any internal photographs are intended as a guide only and it should not be assumed that any of the furniture/fittings are included in any sale. Where shown, details of lease, ground rent and service charge are provided by the vendor and their accuracy cannot be guaranteed, as the information may not have been verified and further checks should be made either through your solicitor/conveyance. Where appliances, including central heating, are mentioned, it cannot be assumed that they are in working order, as they have not been tested. Please also note that wiring, plumbing and drains have not been checked.