



Oxford Gardens, W10

Oxford Gardens, W10

A beautifully renovated semi-detached home in Notting Hill has been designed to maximise the flow of natural light and create a modern, welcoming sanctuary.

From its charming yet traditional exterior, one might be surprised by the calibre of contemporary design within this four-bedroom property on Oxford Gardens, Notting Hill. Stepping in from the quiet, tree-lined street, it's immediately clear that meticulous attention has been paid to the renovation of this semi-detached house. Spanning three floors, the home features high-quality wood flooring, a state-of-the-art kitchen, and spa-like modern bathrooms.

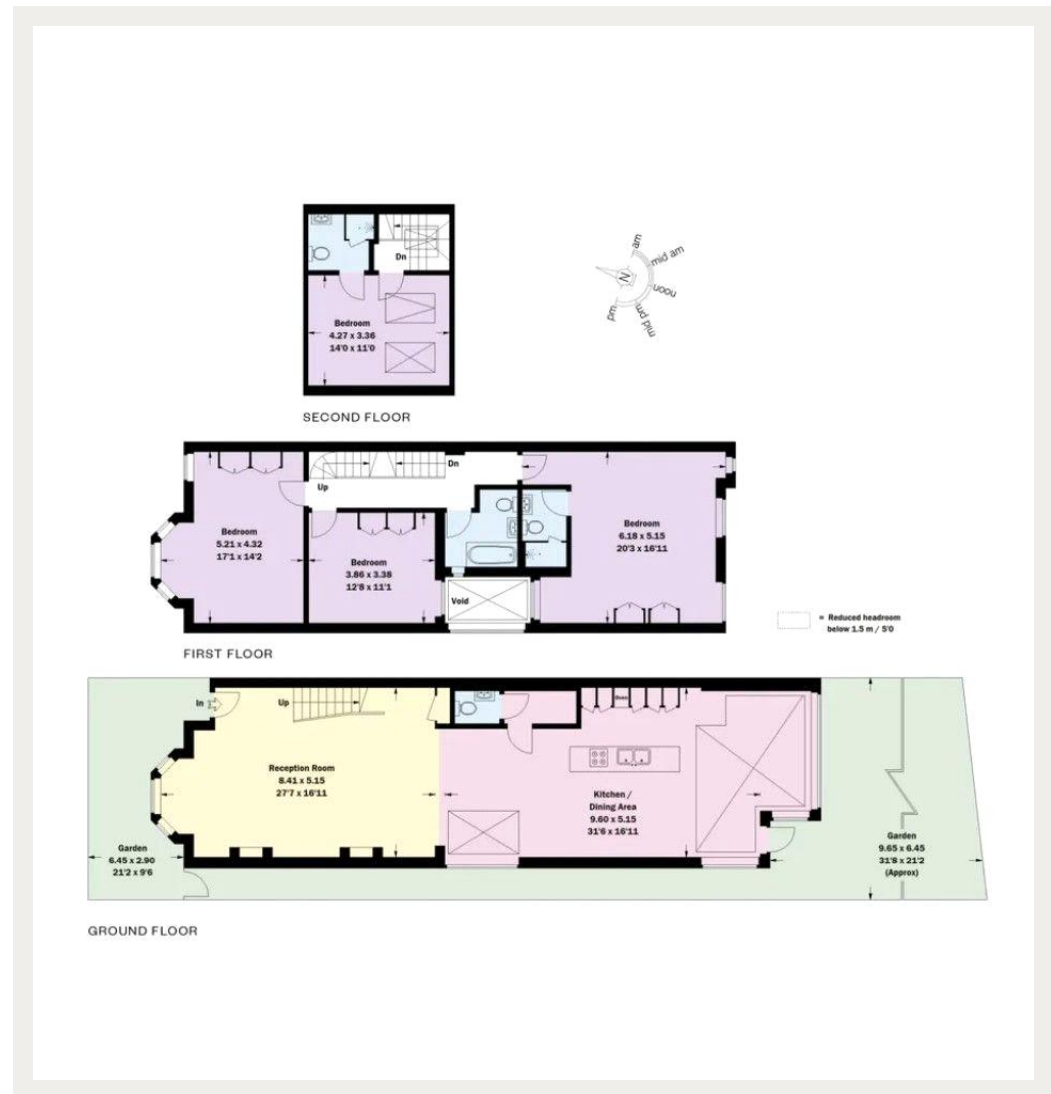
What truly sets this family home apart, however, is the seamless connection between the indoor and outdoor spaces. This is most striking in the main living area, where multi-storey glass windows and a contemporary conservatory dining room open out onto a large private garden. The house also boasts four double bedrooms, a utility room, and a guest washroom.

Situated in the northern part of Notting Hill, this family home is ideally located for city commuters and is within easy reach of a host of excellent amenities, attractions, and green spaces.

Council Tax Band: N/A (Kensington and Chelsea)
Tenure: Freehold

Modern Design, Private Garden, Turnkey Refurbishment, Open Plan

Asking price: £2,650,000



Whilst every effort is made to ensure the accuracy of these details, it should be noted that the measurements are approximate only. Floorplans are for representation purposes only and prepared according to the RICS Code of Measuring Practice by our floorplan provider. Therefore, the layout of doors, windows and rooms are approximate and should be regarded as such by any prospective purchaser. Any internal photographs are intended as a guide only and it should not be assumed that any of the furniture/fittings are included in any sale. Where shown, details of lease, ground rent and service charge are provided by the vendor and their accuracy cannot be guaranteed, as the information may not have been verified and further checks should be made either through your solicitor/conveyance. Where appliances, including central heating, are mentioned, it cannot be assumed that they are in working order, as they have not been tested. Please also note that wiring, plumbing and drains have not been checked.

020 7096 9476

contact@landstones.co.uk