



Ladbroke Grove, W10

Ladbroke Grove, W10

Blending contemporary and industrial-inspired design, this beautifully presented one-bedroom apartment offers the rare luxury of private outdoor space and occupies an enviable position in the cultural heart of Notting Hill.

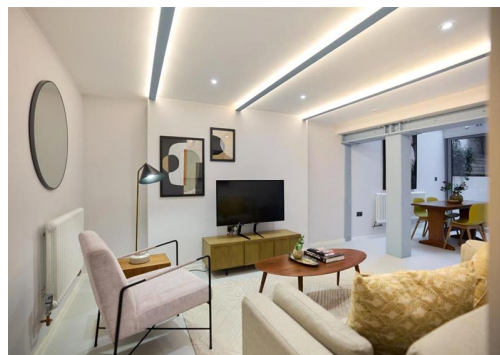
Thoughtfully designed throughout, the apartment showcases a striking architectural aesthetic where raw materials, clean lines and modern finishes combine to create a home of both style and substance. Every element has been carefully considered to maximise light, space and functionality, resulting in a property that feels both contemporary and timeless.

At the heart of the home is a stunning open-plan reception room, centred around floor-to-ceiling bi-folding doors and dramatic overhead skylights that flood the interior with natural light throughout the day. The seamless connection between the indoor living space and the private outdoor terrace creates a wonderful sense of openness, making the apartment feel significantly larger than its footprint and providing an ideal setting for entertaining, dining, or simply relaxing.

The sleek designer kitchen has been thoughtfully integrated into the living space and features high-quality appliances, smart storage solutions and elegant finishes. Combining practicality with striking design, it complements the apartment's architectural style while enhancing the natural flow of the open-plan layout.

The bedroom continues the property's design-led approach, offering a calm and inviting retreat, while the carefully curated interiors create a cohesive aesthetic throughout. The result is a home that balances contemporary urban living with warmth, character and individuality.

The private outdoor space is an exceptionally rare feature for a property of this type and provides a valuable extension of the living accommodation, perfect for enjoying morning coffee, summer evenings or entertaining



Whilst every effort is made to ensure the accuracy of these details, it should be noted that the measurements are approximate only. Floorplans are for representation purposes only and prepared according to the RICS Code of Measuring Practice by our floorplan provider. Therefore, the layout of doors, windows and rooms are approximate and should be regarded as such by any prospective purchaser. Any internal photographs are intended as a guide only and it should not be assumed that any of the furniture/fittings are included in any sale. Where shown, details of lease, ground rent and service charge are provided by the vendor and their accuracy cannot be guaranteed, as the information may not have been verified and further checks should be made either through your solicitor/conveyance. Where appliances, including central heating, are mentioned, it cannot be assumed that they are in working order, as they have not been tested. Please also note that wiring, plumbing and drains have not been checked.

020 7096 9476

contact@landstones.co.uk