



Old Court Place, W8

## Old Court Place, W8

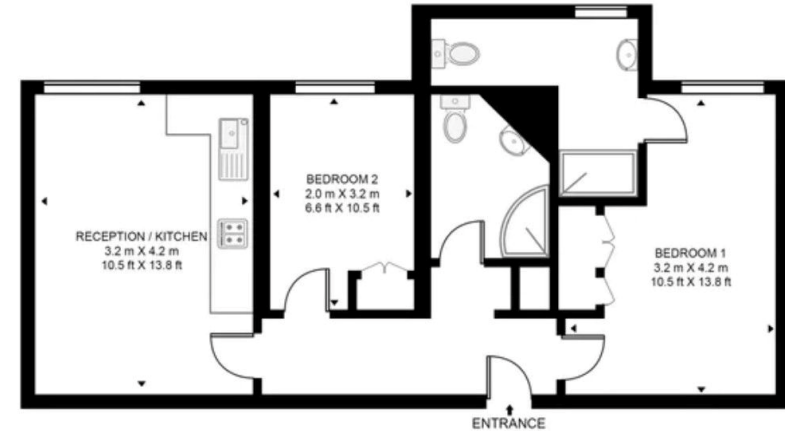
An immaculate third floor two bedroom, two bathroom apartment in this well regarded portered block, situated just West of Hyde Park.

Perfectly positioned in the heart of Kensington with its range of high-street shops, Michelin-starred restaurants, cafes, and lively bars, Hyde Park is also a short walk away. Kensington High Street is the closest underground station.

Council Tax Band: E (Kensington and Chelsea)  
Deposit: £3,250

24/7 Porter, Heating Included, Lift Access

**Asking price:** £750 pw



020 7096 9476

contact@landstones.co.uk

Whilst every effort is made to ensure the accuracy of these details, it should be noted that the measurements are approximate only. Floorplans are for representation purposes only and prepared according to the RICS Code of Measuring Practice by our floorplan provider. Therefore, the layout of doors, windows and rooms are approximate and should be regarded as such by any prospective tenant.