



Ladbroke Grove, W10

Ladbroke Grove, W10

Tucked away just off Ladbroke Grove, this charming and characterful one-bedroom apartment is presented in immaculate condition following a tasteful refurbishment. The property further benefits from private outdoor space and is offered with a share of the freehold.

Following a thoughtful and comprehensive renovation, the apartment beautifully blends cottage-style charm with contemporary living, with careful attention paid to every detail. Accessed via a private courtyard, the Victorian-style chequered patio provides a delightful and secluded setting, perfect for enjoying a morning coffee.

Inside, the open-plan living and kitchen space is both stylish and inviting, featuring wooden flooring with underfloor heating for added comfort. Elegant timber-framed French doors flood the space with natural light and open directly onto the courtyard, creating a seamless connection between indoor and outdoor living, ideal for al fresco dining and entertaining.

The bedroom is well proportioned and thoughtfully designed, with integrated storage enhancing both practicality and flow.

A nod to the property's Victorian heritage continues into the well-appointed bathroom, complete with a traditional freestanding bath and classic chequered tiling, combining timeless design with modern functionality.

Ideally located just off Ladbroke Grove, the property is within easy walking distance of Ladbroke Grove Underground Station, providing convenient access across London. The surrounding area offers a vibrant mix of cafés, restaurants, and the renowned Portobello Road market, all just moments from your doorstep.

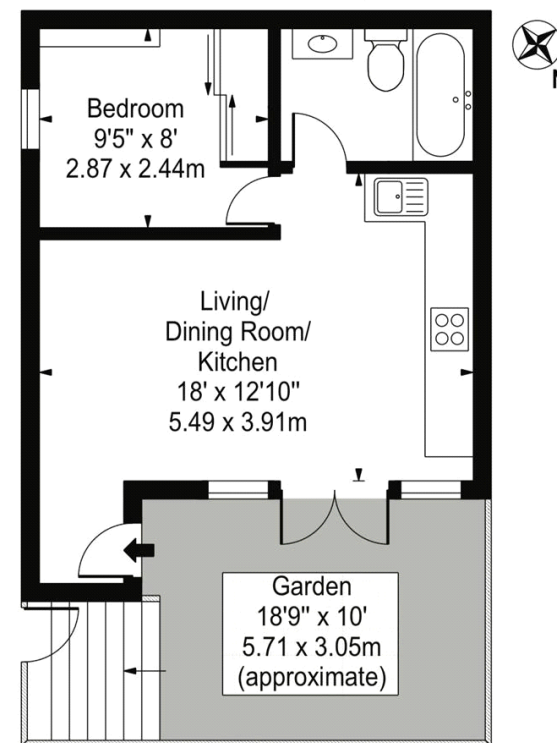
Council Tax Band: C (Kensington and Chelsea)
Tenure: Share of Freehold (990 years)

Private Outside Space , Share of Freehold, Underfloor



Ladbroke Grove, W10

Approx. Gross Internal Area 352 Sq Ft - 32.70 Sq M



Lower Ground Floor

For Illustration Purposes Only - Not To Scale

This floor plan should be used as a general outline for guidance only and does not constitute in whole or in part an offer or contract. Any intending purchaser or lessee should satisfy themselves by inspection, searches, enquiries and full survey as to the correctness of each statement. Any areas, measurements or distances quoted are approximate and should not be used to value a property or be the basis of any sale or let.

Whilst every effort is made to ensure the accuracy of these details, it should be noted that the measurements are approximate only. Floorplans are for representation purposes only and prepared according to the RICS Code of Measuring Practice by our floorplan provider. Therefore, the layout of doors, windows and rooms are approximate and should be regarded as such by any prospective purchaser. Any internal photographs are intended as a guide only and it should not be assumed that any of the furniture/fittings are included in any sale. Where shown, details of lease, ground rent and service charge are provided by the vendor and their accuracy cannot be guaranteed, as the information may not have been verified and further checks should be made either through your solicitor/conveyance. Where appliances, including central heating, are mentioned, it cannot be assumed that they are in working order, as they have not been tested. Please also note that wiring, plumbing and drains have not been checked.

020 7096 9476

contact@landstones.co.uk