



Earl's Court Square, SW5

Earl's Court Square, SW5

A bright and vast two double bedroom apartment set on the third floor (with lift) of this attractive period building with direct views over a well maintained garden square moments from Earl's Court tube station.

Set in one of the sought after garden square in the area, Earl's Court Square is ideally located moments from Earl's Court tube stations, also a short walk away from the many shops, bars and restaurants of Earl's Court and South Kensington.

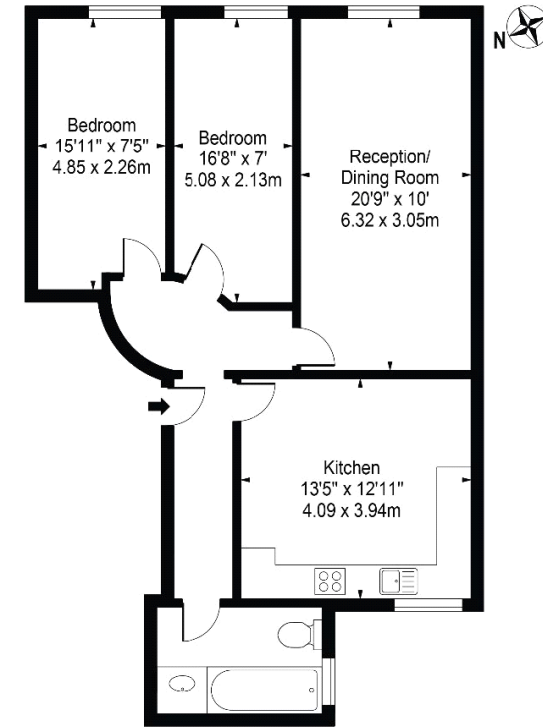
Deposit: £4,000

Lift Access, Eat-in Kitchen, High Ceilings, Communal Garden, South Facing

Asking price: £800 pw



Queens Court,
Earls Court Square, SW5 9DA
Approx. Gross Internal Area 806 Sq Ft - 74.88 Sq M



Third Floor
For Illustration Purposes Only - Not To Scale

This floor plan should be used as a general outline for guidance only and does not constitute in whole or in part an offer or contract. Any intending purchaser or lessee should satisfy themselves by inspection, searches, enquiries and full survey as to the correctness of each statement. Any areas, measurements or distances quoted are approximate and should not be used to value a property or be the basis of any sale or let.

020 7101 1077

fulham@landstones.co.uk

Whilst every effort is made to ensure the accuracy of these details, it should be noted that the measurements are approximate only. Floorplans are for representation purposes only and prepared according to the RICS Code of Measuring Practice by our floorplan provider. Therefore, the layout of doors, windows and rooms are approximate and should be regarded as such by any prospective tenant.