



Trent Road, SW2

## Trent Road, SW2

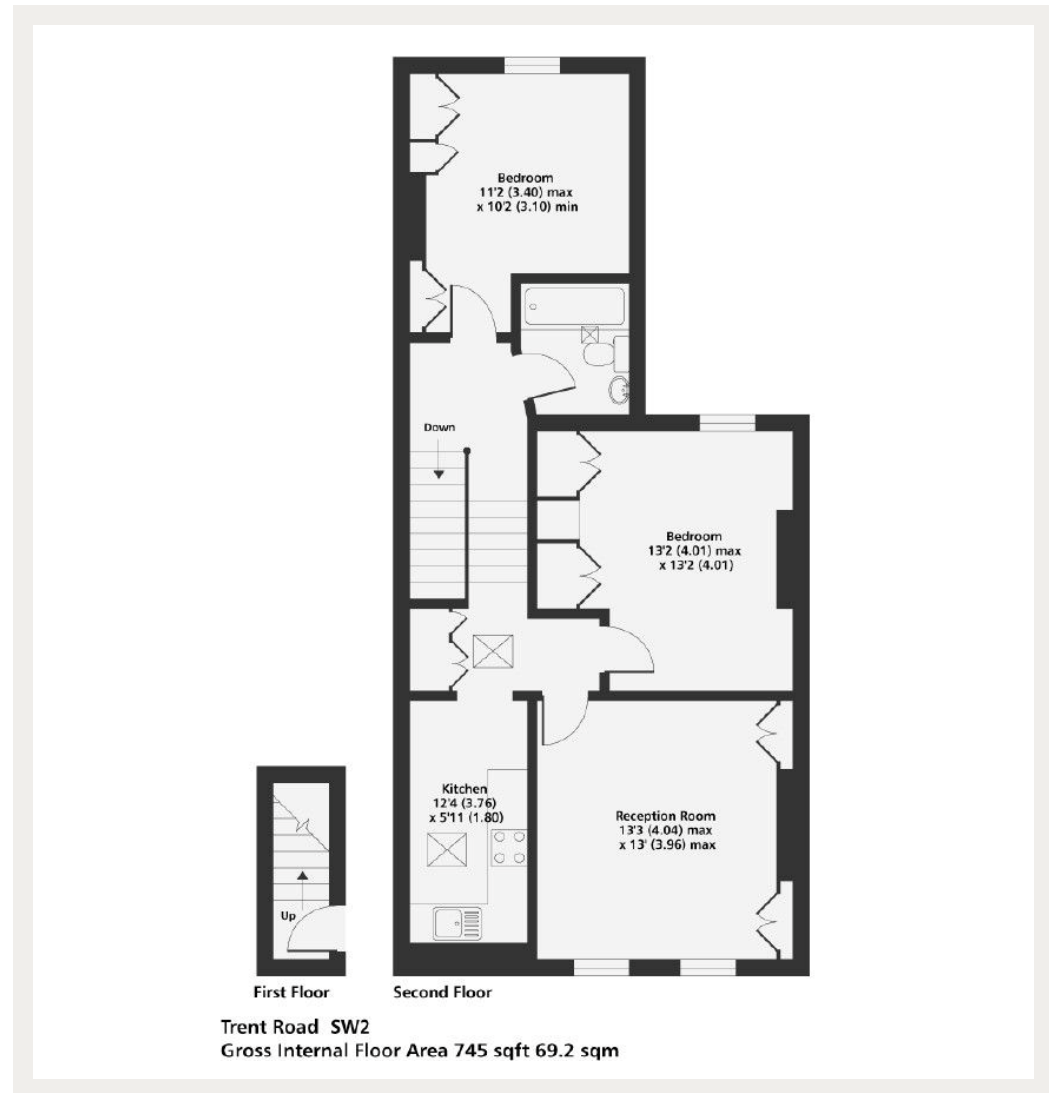
A brand new refurbished two double bedroom apartment set on the second floor of a period conversion building, moments from the green open spaces of Brockwell Park.

Trent Road is a sought-after leafy street that enjoys a neighbourly atmosphere. A few minutes walk from central Brixton and the Victoria Line, and a short stroll away to the green open spaces of Brockwell Park. The location is perfect for anyone who wants to be close to the action, yet retain a sense of calm. Excellent transport links are available, with the first stop on the Victoria Line at Brixton tube station and multiple day and night buses running up and down Brixton Hill, whisking you to the tube and onward into central London.

Council Tax Band: C  
Deposit: £3,125  
Holding Deposit: £625

Newly Refurbished, Separate Kitchen, Split Level, Top Floor, Two Bedrooms

**Asking price:** £625 pw



Whilst every effort is made to ensure the accuracy of these details, it should be noted that the measurements are approximate only. Floorplans are for representation purposes only and prepared according to the RICS Code of Measuring Practice by our floorplan provider. Therefore, the layout of doors, windows and rooms are approximate and should be regarded as such by any prospective tenant.

020 7101 1077

fulham@landstones.co.uk