



Point West, Cromwell Road, SW7

Point West, Cromwell Road, SW7

Offered on a Short-Let basis, a superb three-bedroom split-level apartment on the ninth floor of a secure and well-managed building, offering far-reaching panoramic views across the London skyline.

Extending to almost 1,200 sq ft of internal living space, the apartment is bright and airy throughout. Floor-to-ceiling sliding doors open onto a private east-facing balcony, capturing impressive city views and allowing natural light to flood the living areas, seamlessly blending indoor and outdoor living.

The generous open-plan reception room is both inviting and highly functional, providing an excellent setting for entertaining or relaxed family living. A separate kitchen is well appointed, featuring smart storage solutions and a practical layout ideal for day-to-day use.

The rare three-bedroom arrangement offers excellent flexibility. The principal bedroom is located on the upper level and benefits from built-in storage and an en suite bathroom with a full-size bathtub. Two further well-proportioned bedrooms also feature built-in storage, making them ideal for guests, family members, or home office use.

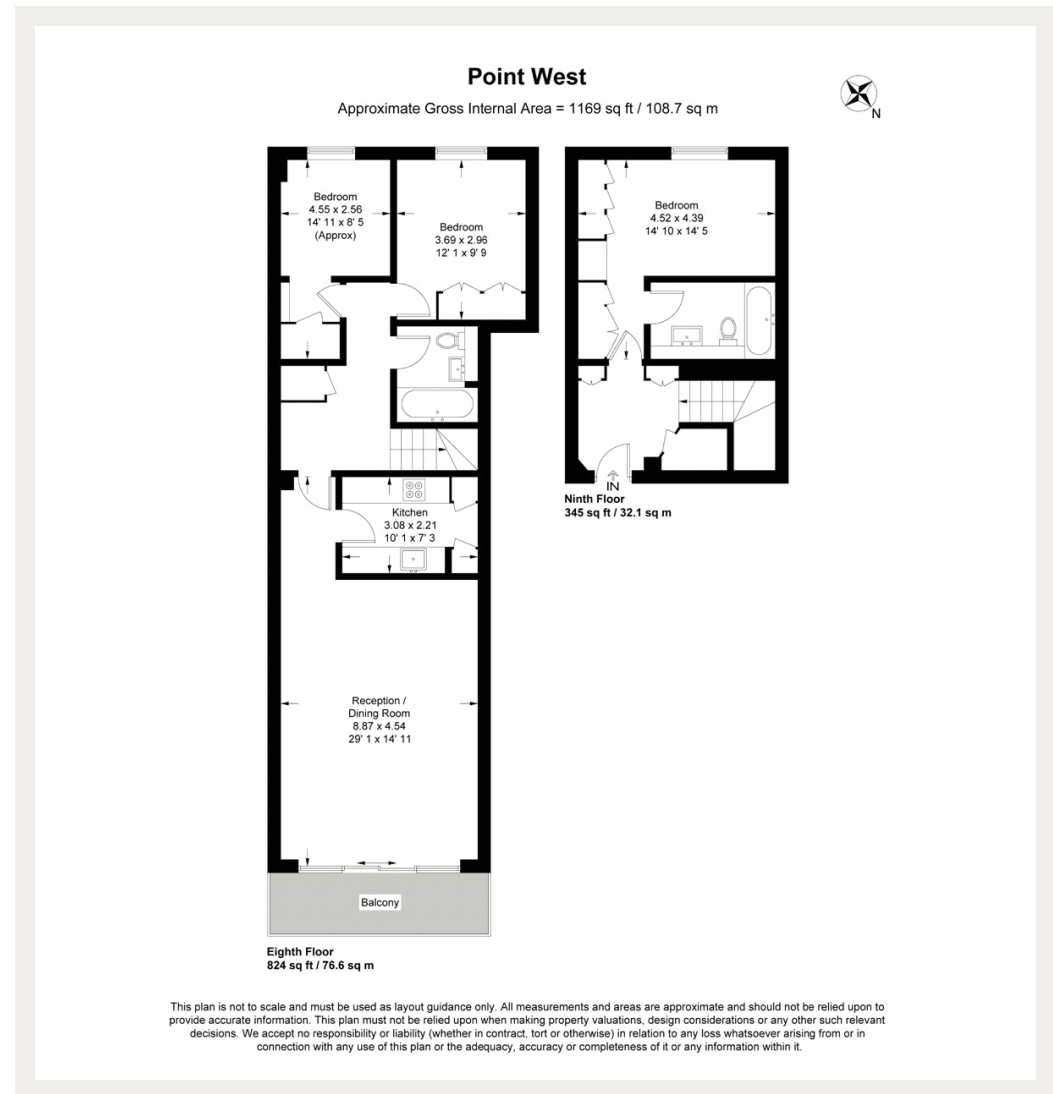
Point West is a highly regarded development offering lift access and a 24-hour concierge service, providing exceptional security and convenience. Gloucester Road Underground Station is just moments away, alongside an excellent selection of cafés, restaurants, and supermarkets. Imperial College London is within easy walking distance, while Hyde Park is close by for those who enjoy green open spaces and outdoor living.

Deposit: £7,366
Parking options: Underground
Garden details: Terrace

Concierge, Excellent Transport Links, Private Terrace, Split Level, Underground Parking, All Bills Inclusive

020 7096 9476

contact@landstones.co.uk



Whilst every effort is made to ensure the accuracy of these details, it should be noted that the measurements are approximate only. Floorplans are for representation purposes only and prepared according to the RICS Code of Measuring Practice by our floorplan provider. Therefore, the layout of doors, windows and rooms are approximate and should be regarded as such by any prospective tenant.