



Chelsea Harbour, SW10

## Chelsea Harbour, SW10

Offered on a Short let basis, this beautifully presented three-bedroom penthouse, spanning over 2,000 sq ft, is set within the prestigious King's Quay development and offers refined living in an exceptional waterfront location.

Bright and spacious throughout, the property features a generous open-plan reception and dining area with floor-to-ceiling windows leading onto a large private, south-facing terrace with stunning harbour views.

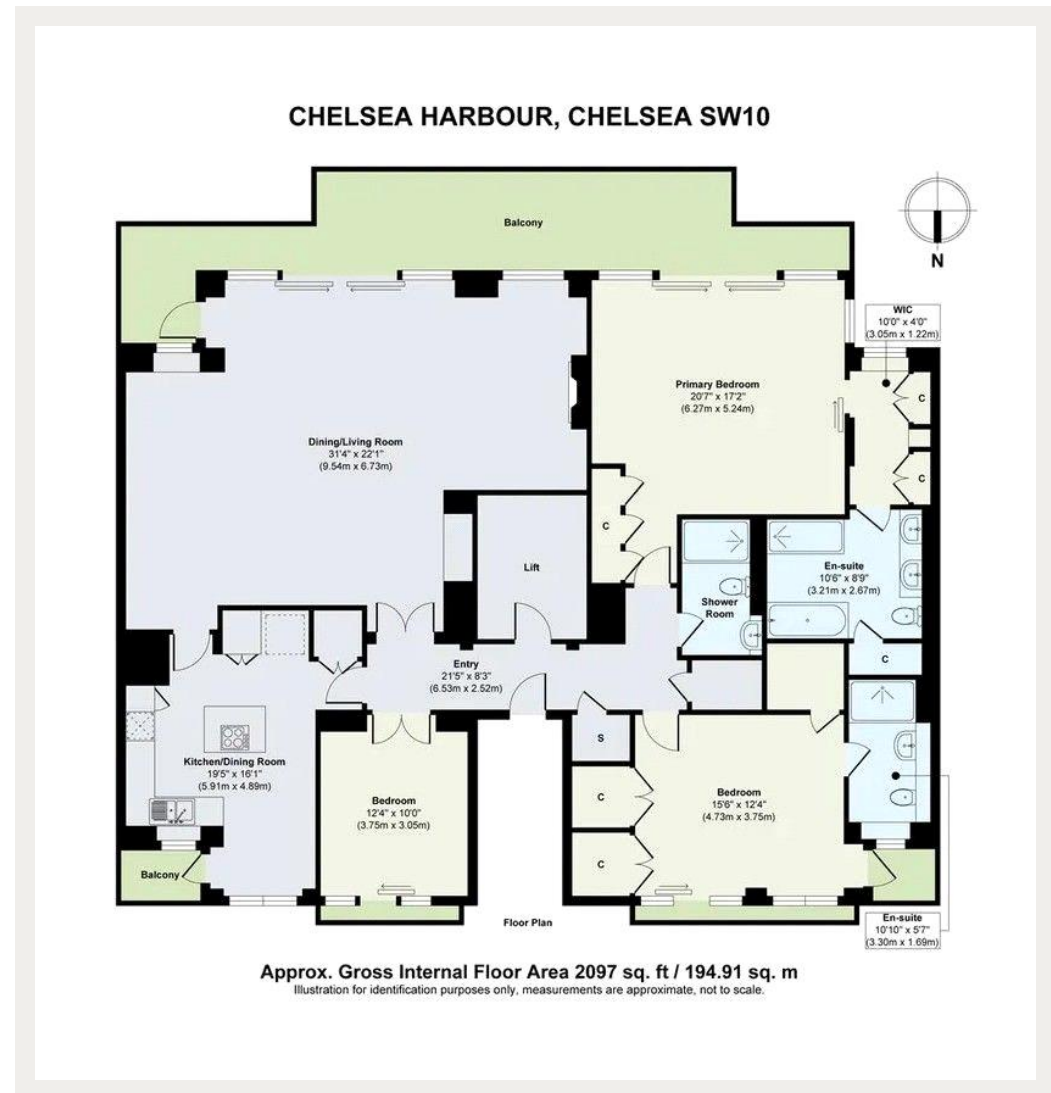
The sleek, fully fitted kitchen is finished to a high specification with integrated appliances, while all three bedrooms are well-proportioned. The principal suite provides a luxurious retreat with an en-suite bathroom and dressing area, the second bedroom also benefits from its own modern en-suite, and the third room offers flexibility as a guest bedroom or study. A further stylish family bathroom and excellent built-in storage complete the accommodation.

Residents enjoy a range of premium amenities including secure underground parking, lift access, 24-hour concierge, and exclusive leisure facilities. Ideally located close to the vibrant shops, restaurants, and transport links of Chelsea, Fulham, and King's Road, this exceptional home is perfectly suited for both professionals and families seeking comfort, convenience, and riverside living.

Council Tax Band: H  
Deposit: £8,666

Air Conditioning, All Bills Inclusive, Direct Lift Access, Outdoor Space, Penthouse Apartment, Porter, Waterfront

**Asking price:** £2,000 pw



Whilst every effort is made to ensure the accuracy of these details, it should be noted that the measurements are approximate only. Floorplans are for representation purposes only and prepared according to the RICS Code of Measuring Practice by our floorplan provider. Therefore, the layout of doors, windows and rooms are approximate and should be regarded as such by any prospective tenant.

020 7096 9476

contact@landstones.co.uk