



Fulham Road, SW6

Fulham Road, SW6

Offering generous proportions throughout, the property benefits from high ceilings and excellent natural light, creating a wonderful sense of space. The accommodation comprises a spacious reception room with ample room for both living and dining, a well-equipped kitchen, a double bedroom and a modern bathroom.

The property enjoys a private patio garden, providing a peaceful outdoor space perfect for relaxing or entertaining.

Ideally positioned within easy walking distance of Fulham Broadway Underground Station, residents can enjoy immediate access to an excellent selection of shops, cafés, restaurants and local amenities, while still benefiting from a quiet and secluded setting.

Council Tax Band: c (Hammersmith & Fulham)
Deposit: £2,653
Holding Deposit: £530
Garden details: Front Garden

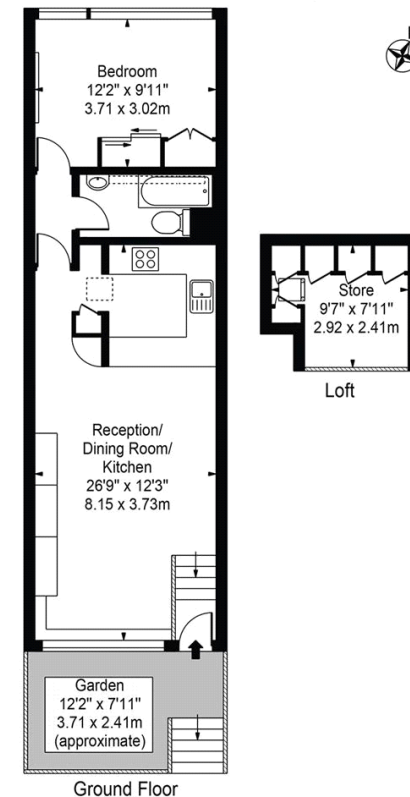
Access To Communal Gardens, High Ceilings & Wood Floors, patio, Separate Kitchen

Asking price: £2,300 pcm



West London Studios, SW6

Approx. Gross Internal Area 585 Sq Ft - 54.35 Sq M



Ground Floor
For Illustration Purposes Only - Not To Scale

This floor plan should be used as a general outline for guidance only and does not constitute in whole or in part an offer or contract. Any intending purchaser or lessee should satisfy themselves by inspection, searches, enquiries and full survey as to the correctness of each statement. Any areas, measurements or distances quoted are approximate and should not be used to value a property or be the basis of any sale or let.

020 7101 1077

fulham@landstones.co.uk

Whilst every effort is made to ensure the accuracy of these details, it should be noted that the measurements are approximate only. Floorplans are for representation purposes only and prepared according to the RICS Code of Measuring Practice by our floorplan provider. Therefore, the layout of doors, windows and rooms are approximate and should be regarded as such by any prospective tenant.